

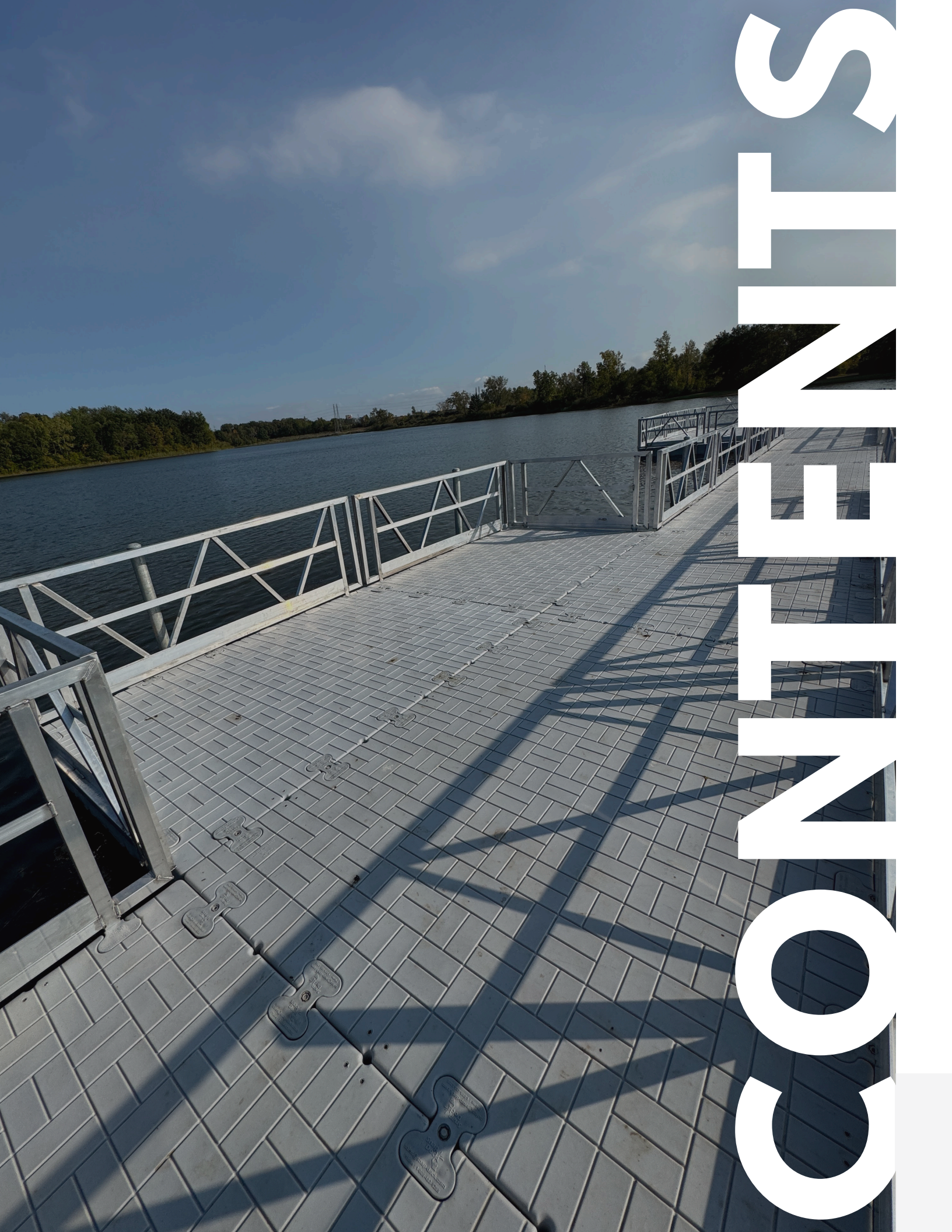


2026

Product Guide

Quarter 1





CONCRETE
SOLUTIONS

Our Story 4

The Snap Dock Advantage 5

Paddle Port 6

Product Specifications. 7

Snap Port 60 Installation Options . 9

Paddle Port Installation Options. .10

Snap Port 60 Accessories11

Snap Port 80 Accessories12

Snap Port Inline Accessories. . . .13

Modular Gangways and Ramps . .14

Accessories15

Coupler System16

Anchoring Options.18

Snap Dock Builder Tutorial24

Residential Layouts26

Commercial Layouts27

Industrial Applications28

Product Dimensions29

 40"x 60" Dock Section

 60"x 120" Dock Section

 80"x 120" Dock Section

 Snap Port 60

 Snap Port 80

 Snap Port Inline

 Paddle Port

Catalog37

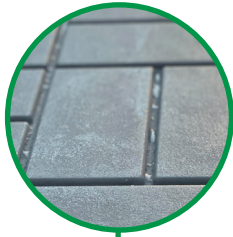
10 Year Limited Warranty56

Gallery58

Our Story

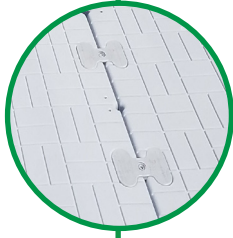
Snap Dock launched in 2021 to address an opportunity in the modular floating dock market in which the leading manufacturers were focused either on technical capabilities or aesthetics, but not both. Snap Dock created a product line that married superior aesthetics and improved technical capabilities with a diverse lineup of floating docks, PWC lifts, and accessories with core tenets of durability and ease of use. Today, as a family business, Snap Dock has over 100 dealers across the U.S. and Canada and partners with Wearth Group to supply best-in-class floating dock products throughout Europe, the Middle East, and Africa.

The Snap Dock Advantage



ATTRACTIVE NON-SLIP SURFACE

All dock sections feature an attractive non-slip surface that channels water and helps conceal dirt.



SEAMLESS COLOR INTEGRATION

Snap Dock's coupler system matches seamlessly with your dock system for the perfect aesthetic.



REINFORCED SURFACE SUPPORT

Snap Dock's product lineup is engineered with additional material to minimize deflection in the walking surface, ensuring rigidity.



UNMATCHED STRENGTH

Snap Dock's coupler system allows our docks to withstand significant wave action in rough water. We guarantee consistent performance in even the most extreme weather conditions.



INDUSTRIAL GRADE DURABILITY

All Snap Dock modular components are rotationally molded with industrial grade plastic (LLDPE) ensuring consistent performance in the most extreme weather conditions.



BEST-IN-CLASS CUSTOMER SERVICE

We are committed to creating a family-like customer experience for distributors, dealers, and end users.



NEW PADDLE PORT

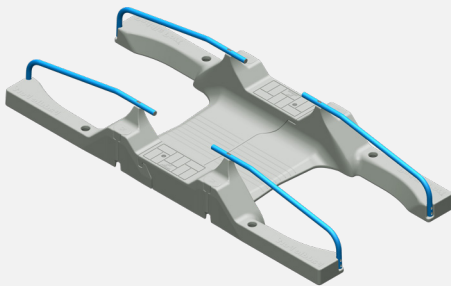


Two-Piece Design

Half Step to Safely Enter & Exit

Compact Launch Platform

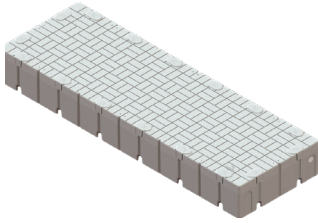
Textured Handrails



Operating Capacity 500 lbs / 227 kg
Weight 160 lbs / 73 kg
Dimensions 137" x 58.5" x 22.5"
SKU: PADDLE PORT-GR-ASSY

The Snap Dock Paddle Port™ features a two-piece design with a compact launch platform that makes it easy to launch and dock kayakers, canoes, and SUPs. A built-in half step provides added stability for safely entering and exiting your watercraft, while the textured handrails ensure a secure, confident grip. Engineered for versatility, the Paddle Port™ delivers a smooth, stable, and user-friendly launch experience for any waterfront.

Product Specifications

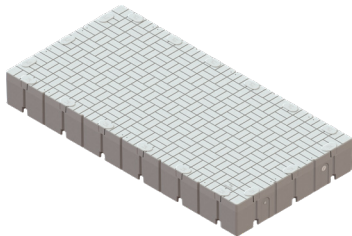
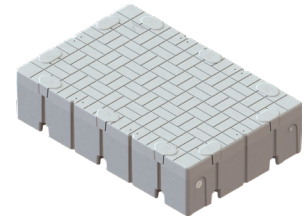


40" X 120" DOCK SECTION

Capacity*: 2150 lbs / 975 kg
Weight: 178 lbs / 81 kg
Dimensions: 117" x 39"
SKU: SNAP120X40-GR-ASSY

40" X 60" DOCK SECTION

Capacity*: 997 lbs / 453 kg
Weight: 119 lbs / 54 kg
Dimensions: 59" x 39"
SKU: SNAP60X40-GR-ASSY

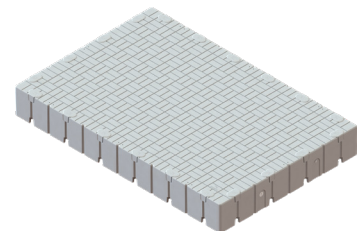


60" X 120" DOCK SECTION

Capacity*: 3150 lbs / 1440 kg
Weight: 270 lbs / 122 kg
Dimensions: 117" x 59"
SKU: SNAP120x60-GR-ASSY

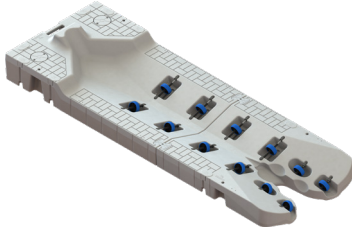
80" X 120" DOCK SECTION

Capacity*: 4224 lbs / 1916 kg
Weight: 330 lbs / 150 kg
Dimensions: 117" x 79"
SKU: SNAP120x80-GR-ASSY



**Capacity at 100% Submersion*





SNAP PORT 60

Operating Capacity: 1750 lbs / 794 kg

Weight: 381 lbs / 173 kg

Dimensions: 168" x 59"

SKU: SNAP PORT60-GR-ASSY

SNAP PORT 80

Operating Capacity: 1883 lbs / 855 kg

Weight: 427 lbs / 194 kg

Dimensions: 156" x 79"

SKU: SNAP PORT80-GR-ASSY



SNAP PORT INLINE

Operating Capacity: 2460 lbs / 1116 kg

Weight: 729 lbs / 331 kg

Dimensions: 326" x 59"

SKU: SNAP PORT INLINE-GR-ASSY

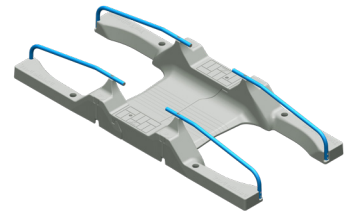
PADDLE PORT

Operating Capacity: 500 lbs / 227 kg

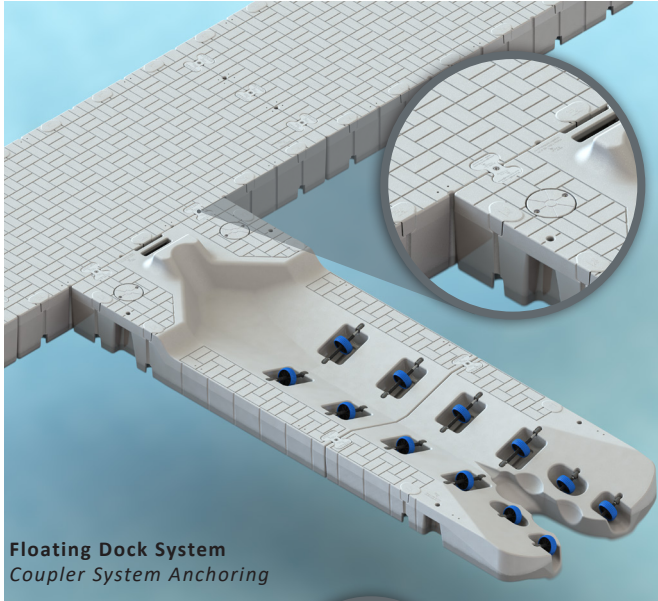
Weight: 160 lbs / 73 kg

Dimensions: 137" x 58.5" x 22.5"

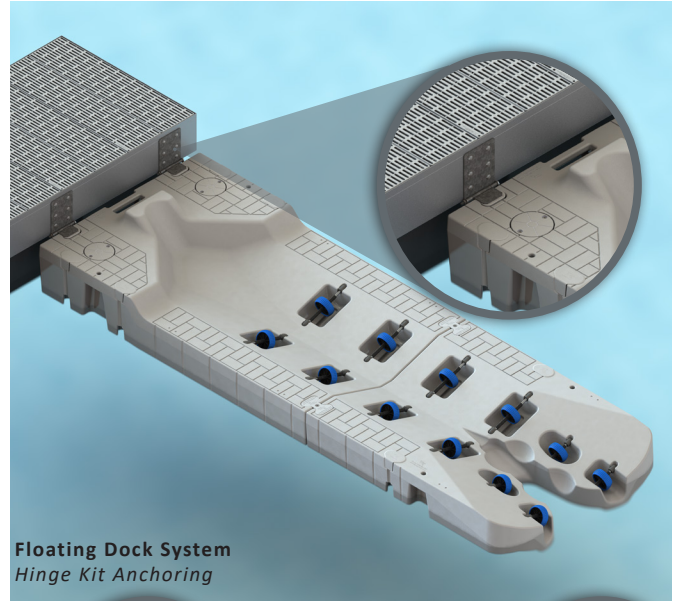
SKU: PADDLE PORT-GR-ASSY



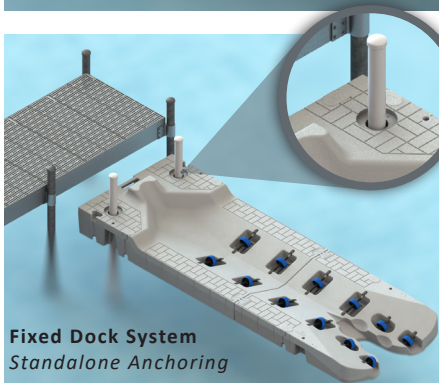
Snap Port 60 Installation Options



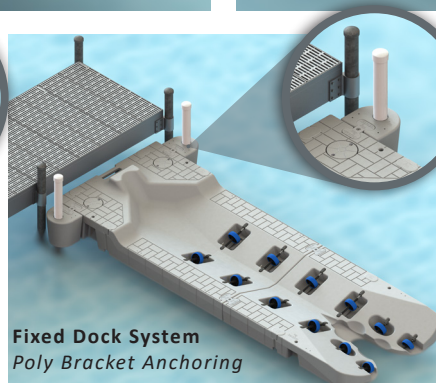
Floating Dock System
Coupler System Anchoring



Floating Dock System
Hinge Kit Anchoring



Fixed Dock System
Standalone Anchoring



Fixed Dock System
Poly Bracket Anchoring



Fixed Dock System
Stand Off Bracket Anchoring

Specifications:

Operating Capacity	1750 lbs / 794 kg
Weight	370 lbs / 168 kg
Dimensions	168" x 59"
SKU:	SNAP PORT60-GR-ASSY

Installation Options:

Snap Dock Installations

- Coupler Anchoring

Floating Installations

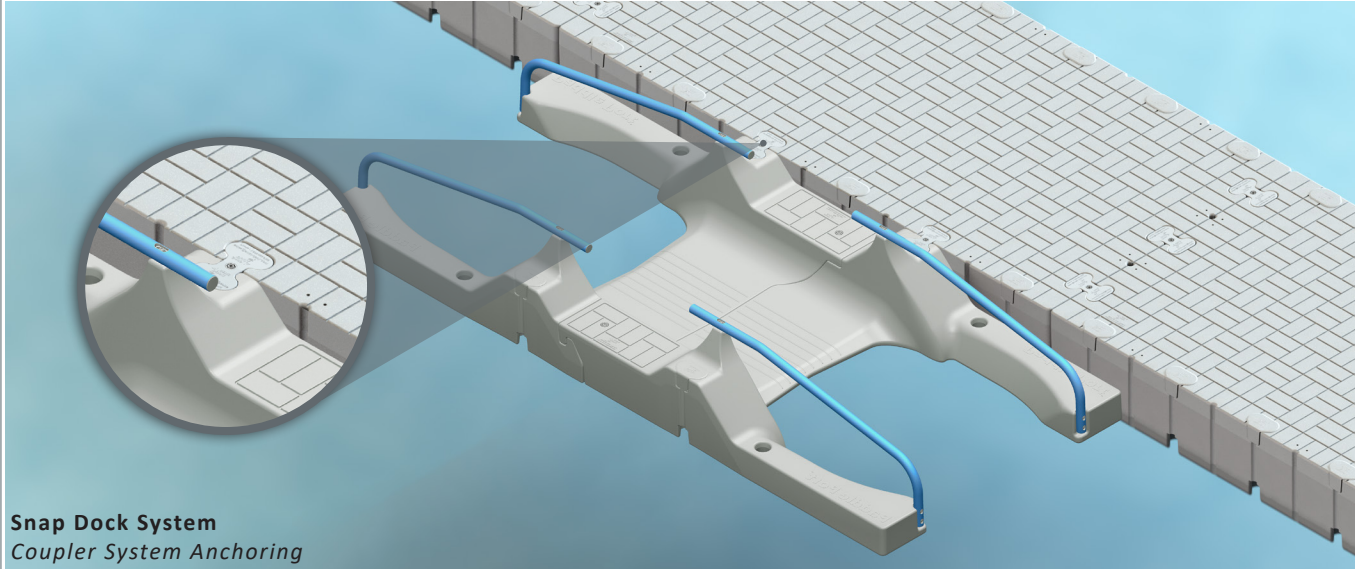
- Hinge Kit Anchoring

Fixed Dock Installations

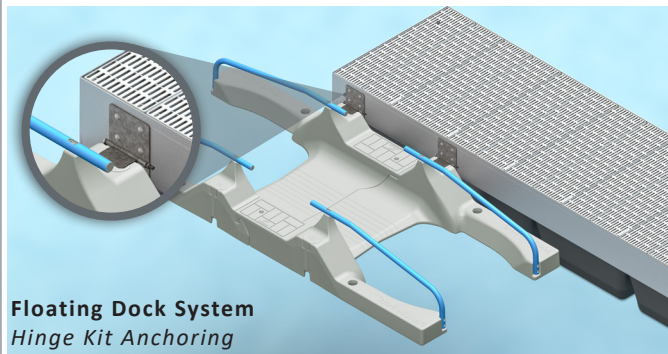
- Stand Off Bracket Anchoring
- Standalone Anchoring



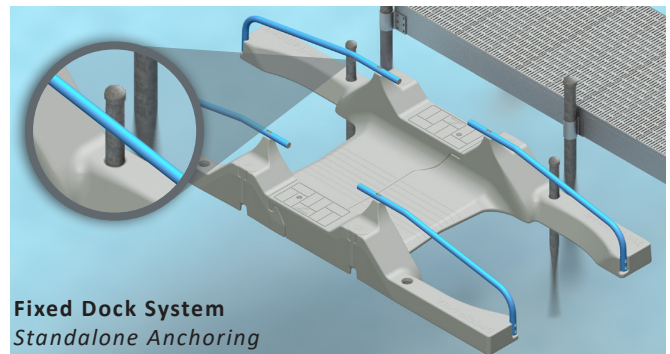
Paddle Port Installation Options



Snap Dock System
Coupler System Anchoring



Floating Dock System
Hinge Kit Anchoring



Fixed Dock System
Standalone Anchoring

Specifications

Operating Capacity	500 lbs / 227 kg
Weight	160 lbs / 73 kg
Dimensions	137" x 58.5" x 22.5"
SKU:	PADDLE PORT-GR-ASSY

Installation Options:

Snap Dock System

- Coupler Anchoring

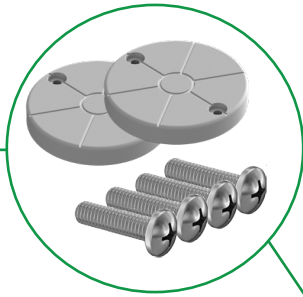
Floating Installations

- Hinge Kit Anchoring

Fixed Dock Installations

- Standalone Anchoring

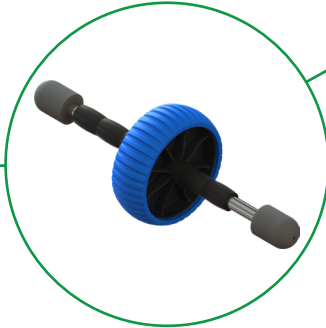
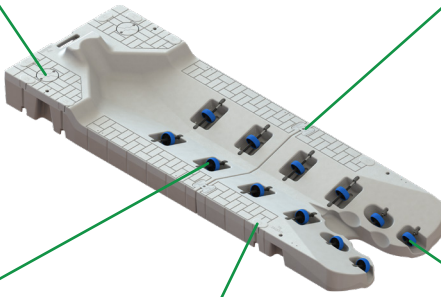
Snap Port 60 Accessories



Port Cover Kit:
 SKU: PORT COVER-GR-ASSY
 Quantity 2
 Bill of Material
 • PORT COVER-GR (2)
 • SCREW-COV (4)



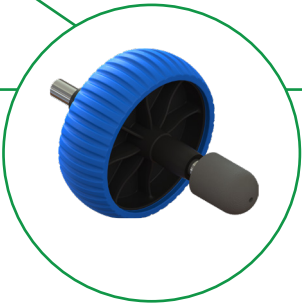
Port Coupler Set:
 SKU: CPLR-PORT-GR
 Quantity 2
 Bill of Material
 • CPLR-GR (2)
 • BOLT-S-GR (1)
 • NUT-GR (1)
 • DRIVETOOL (1)



Port Roller Long Set:
 SKU: ROLLER-L
 Quantity 8
 Bill of Material
 • SPACER (5)
 • WHEEL (1)
 • PLUG (2)
 • SBAR-15 (1)



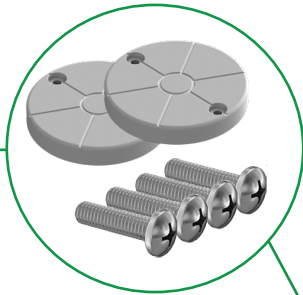
Pocket Filler:
 SKU: PFILL-GR
 Quantity 8
 Bill of Material
 • PFILL-GR (1)



Port Roller Short Set:
 SKU: ROLLER-S
 Quantity 4
 Bill of Material
 • SPACER (2)
 • WHEEL (1)
 • PLUG (1)
 • SBAR-8 (1)



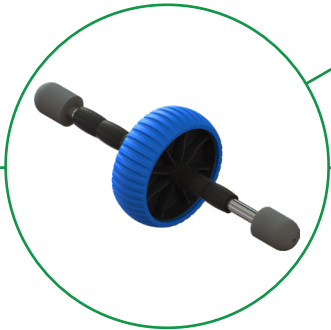
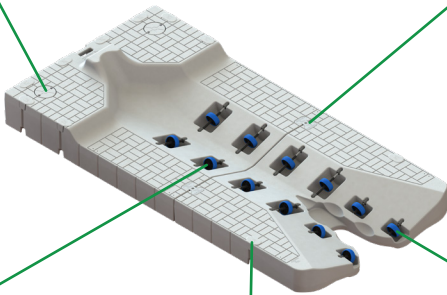
Snap Port 80 Accessories



Port Cover Kit:
 SKU: PORT COVER-GR-ASSY
 Quantity 2
 Bill of Material
 • PORT COVER-GR (2)
 • SCREW-COV (4)



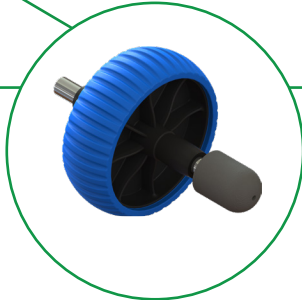
Port Coupler Set:
 SKU: CPLR-PORT-GR
 Quantity 2
 Bill of Material
 • CPLR-GR (2)
 • BOLT-S-GR (1)
 • NUT-GR (1)
 • DRIVETOOL (1)



Port Roller Long Set:
 SKU: ROLLER-L
 Quantity 8
 Bill of Material
 • SPACER (5)
 • WHEEL (1)
 • PLUG (2)
 • SBAR-15 (1)



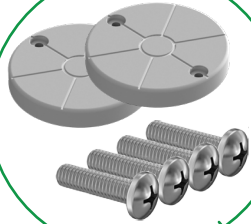
Pocket Filler:
 SKU: PFILL-GR
 Quantity 8
 Bill of Material
 • PFILL-GR (1)



Port Roller Short Set:
 SKU: ROLLER-S
 Quantity 4
 Bill of Material
 • SPACER (2)
 • WHEEL (1)
 • PLUG (1)
 • SBAR-8 (1)



Snap Port Inline Accessories



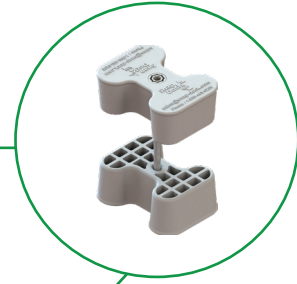
Port Cover Kit:

SKU: PORT COVER-GR-ASSY

Quantity 2

Bill of Material

- PORT COVER-GR (2)
- SCREW-COV (4)



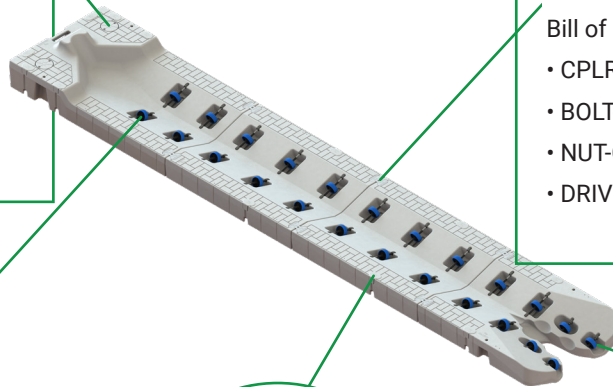
Port Coupler Set:

SKU: CPLR-PORT-GR

Quantity 6

Bill of Material

- CPLR-GR (2)
- BOLT-S-GR (1)
- NUT-GR (1)
- DRIVETOOL (1)



Port Roller Long Set:

SKU: ROLLER-L

Quantity 18

Bill of Material

- SPACER (5)
- WHEEL (1)
- PLUG (2)
- SBAR-15 (1)



Pocket Filler:

SKU: PFILL-GR

Quantity 12

Bill of Material

- PFILL-GR (1)



Port Roller Short Set:

SKU: ROLLER-S

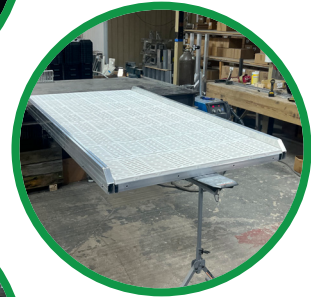
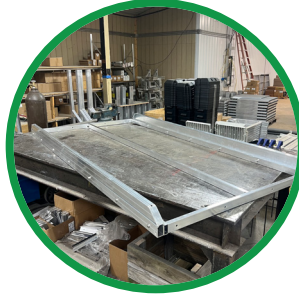
Quantity 4

Bill of Material

- SPACER (2)
- WHEEL (1)
- PLUG (1)
- SBAR-8 (1)



Modular Gangways and Ramps



Product	SKU:
3' x 4' Modular Gangway	GRAMP-3X4-C-ASSY
4' x 4' Modular Gangway	GRAMP-4X4-C-ASSY
3' x 8' Ramp	RAMP-3X8-ASSY
4' x 8' Ramp	RAMP-4X8-ASSY

Gangway Description:

The gangways are constructed with a box-frame design using 2" x 2" and 1" x 2" square tubing. The railings attach directly to the frame during assembly, and modular sections can be combined to create spans up to 24 feet.

Ramp Description:

The ramps are framed out with a box pattern utilizing 2" x 2" and 1" x 2" square tubing. Ramps exclude railings.

Note: All gangways and ramps come with composite decking.



Accessories

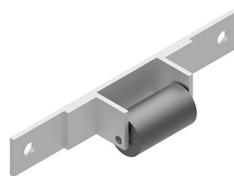
Product	SKU:
3' Abutment Hinge	HINGE-A3
4' Abutment Hinge	HINGE-A4
3' Gangway Hinge (2-Pocket)	GHINGE-2P3-ASSY
4' Gangway Hinge (3-Pocket)	GHINGE-3P4-ASSY
Gangway Roller	GROLLER-KIT
4-Step Retractable Ladder	LADDER-4-ASSY
Dog Step Ladder	DSTEP-ASSY
Bench	BENCH-GR-ASSY
Kayak Rack	K-RACK-ASSY
Umbrella Sleeve	USTAND-ASSY



Abutment Hinges



Gangway Hinges



4' Gangway Roller



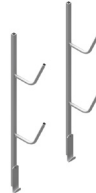
4-Step Retractable Ladder



Dog Step



Umbrella Sleeve



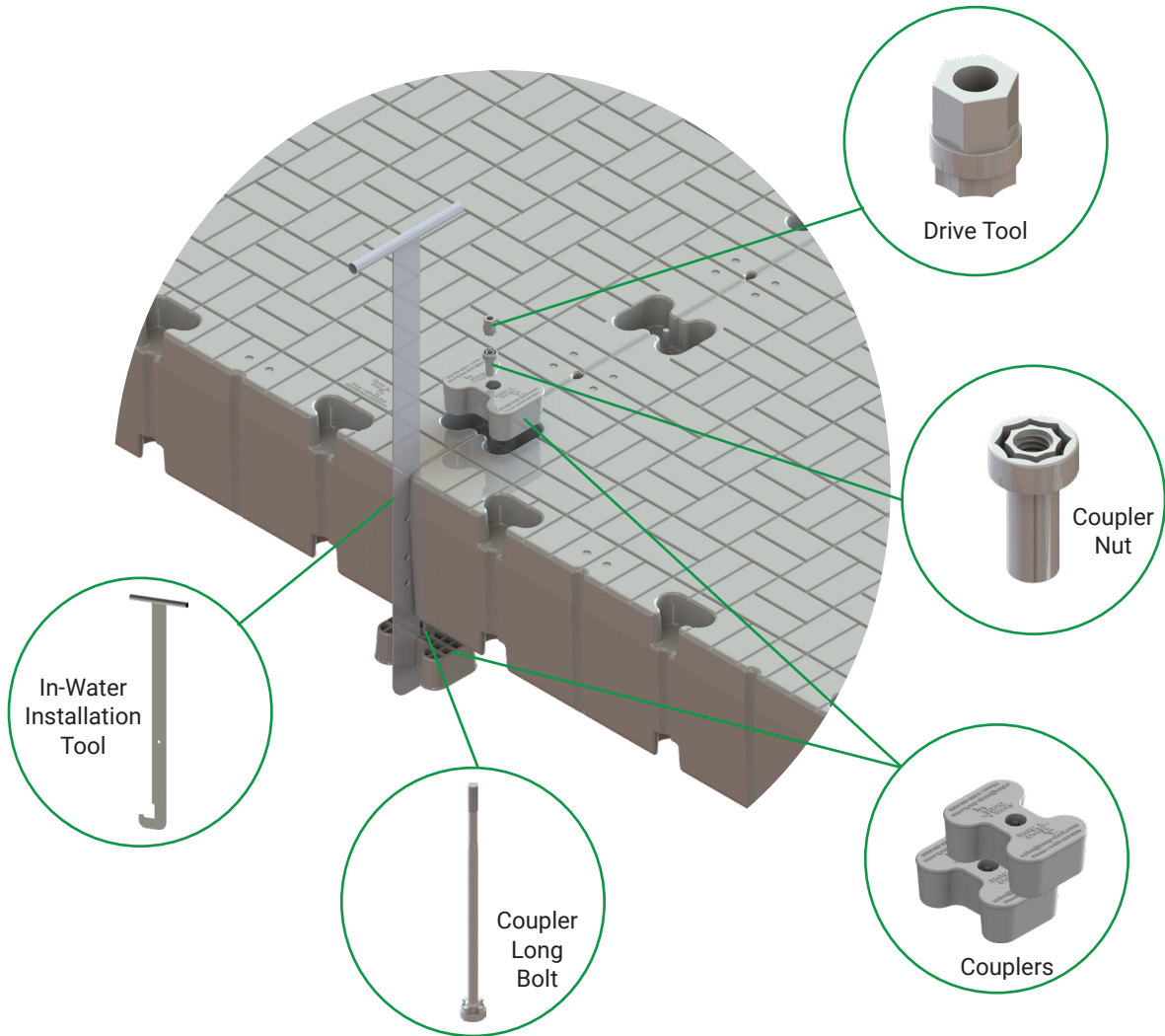
Kayak Rack



Bench



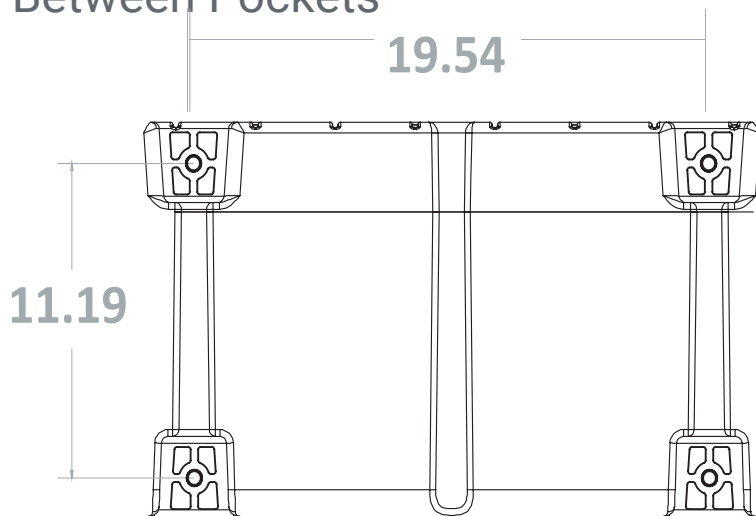
Coupler System



Product	SKU:
In-Water Installation Tool	SNAP INSTALL
Coupler	CPLR-GR
Coupler Long Bolt	BOLT-L-GR
Coupler Nut	NUT-GR
Drive Tool	DRIVETOOL

Half Couplers Hardware Connectors

Center-to-Center Distance
Between Pockets

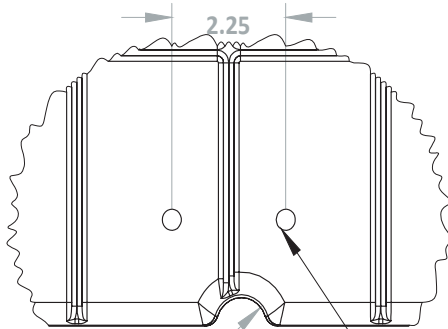


Male Half Coupler:

- HALFCLPR-GR-ASSY (1)
- LOCKNUT-N (1)
- WASHER (1)

Note: The molded bolt thread is 5/8"

DETAIL B



**Cleat Mount
Location**

R0.50

**18-8 STAINLESS THREADED INSERT
5/16"-18 X 0.375"**



Female Half Coupler:

- HALFCPLR-F-GR-ASSY (1)

Note: 5/8" hex bolt with stainless steel washer needed. Hardware Not Included.



Hinge Kits

8" Galvanized Hinge Kit:

SKU: HINGE-KIT-GALV-S-ASSY

- HALFCLPR-GR-ASSY (2)

10" Galvanized Hinge Kit:

SKU: HINGE-KIT-GALV-ASSY

- HALFCLPR-GR-ASSY (2)

10" Stainless Steel Hinge Kit

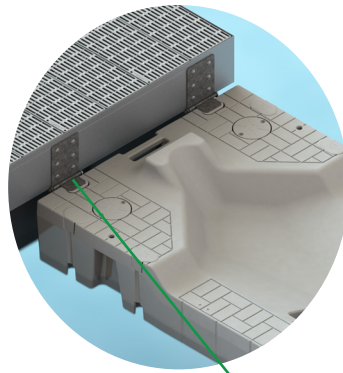
SKU: HINGE-KIT-SS-ASSY

- HALFCLPR-GR-ASSY (2)

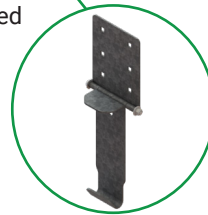
16" Galvanized Hinge Kit:

SKU: HINGE-KIT-GALV-XL-ASSY

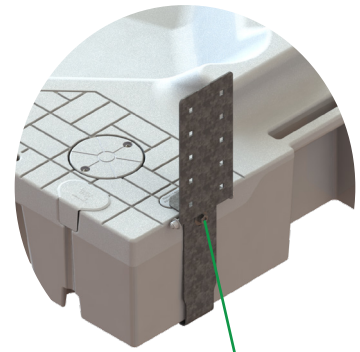
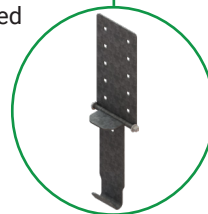
- HALFCLPR-GR-ASSY (2)



10" Galvanized Hinge Kit



16" Galvanized Hinge Kit



Male Half Coupler



Female Half Coupler



Male Half Coupler:

- HALFCLPR-GR-ASSY (1)
- LOCKNUT-N (1)
- WASHER (2)

Note: The molded bolt thread is 5/8"

Female Half Coupler:

- HALFCLPR-F-GR-ASSY (1)

Note: 5/8" hex bolt with stainless steel washer needed. Hardware Not Included

Pipe Bracket

Standard Duty Pipe Bracket:

SKU: STD-BRKT-GR-ASSY

Hole ID: 3.625"

- STD-BRKT-GR-ASSY (1)
- CPLR-PORT-GR (1)

Light Duty Pipe Bracket:

SKU: LTD-BRKT-GR-ASSY

Hole ID: 2.5"

- LTD-BRKT-GR (1)
- CPLR-SET-GR (1)

Low Profile Pipe Bracket:

SKU: LOW-BRKT-GR-ASSY

Hole ID: 3.625"

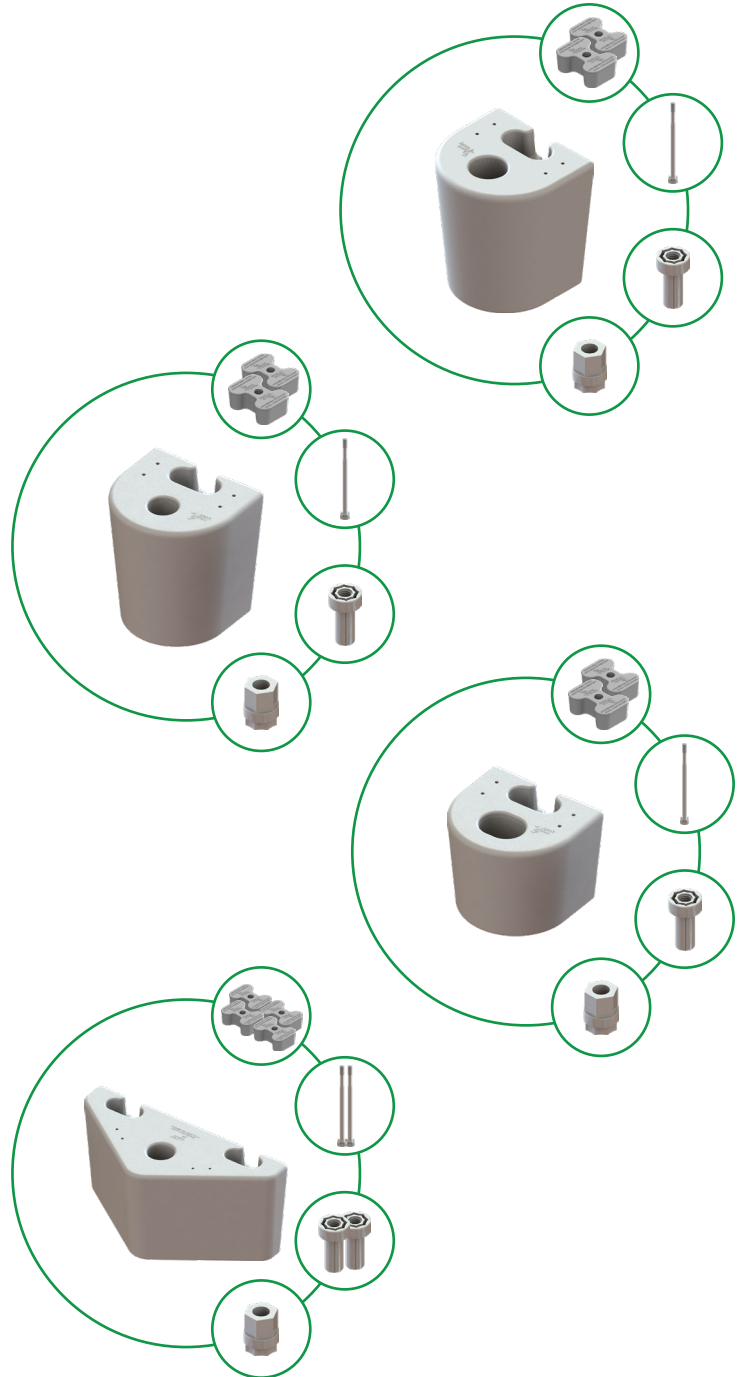
- LOW-BRKT-GR (1)
- CPLR-PORT-GR (1)

Heavy Duty Pipe Bracket:

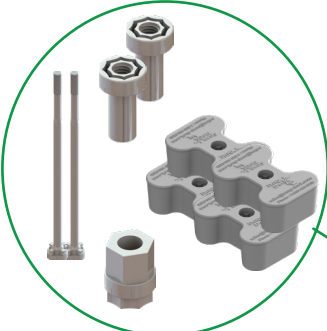
SKU: HD-BRKT-GR-ASSY

Hole ID: 3.625"

- HD-BRKT-GR (1)
- CPLR-SET-GR (2)



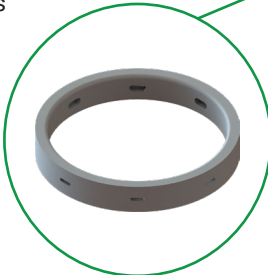
Piling Bracket



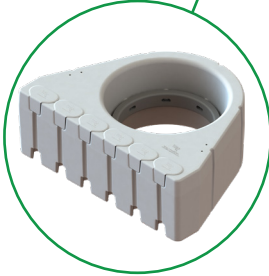
(2) Full Coupler Sets



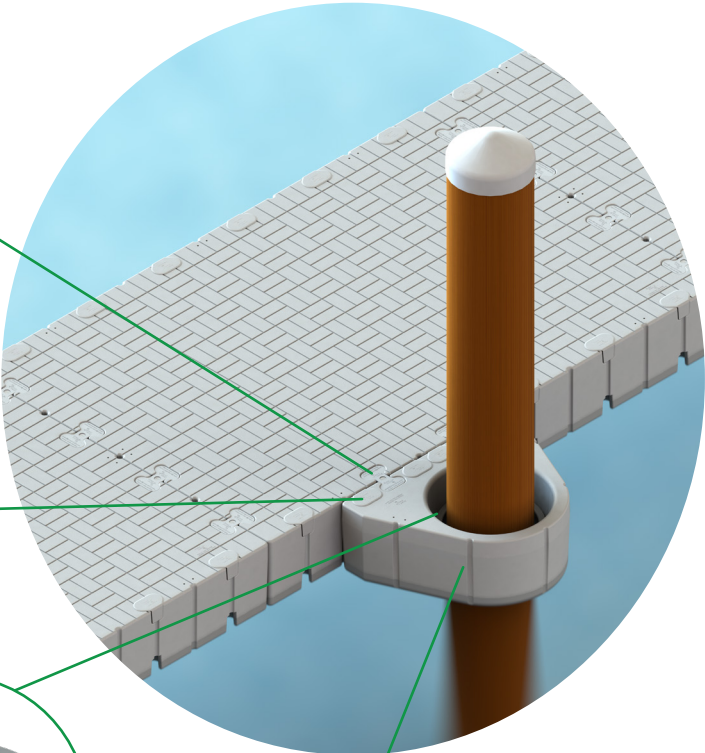
(4) Pocket Fillers



(1) Wear Ring and Hardware



(1) Piling Bracket



Piling Bracket:

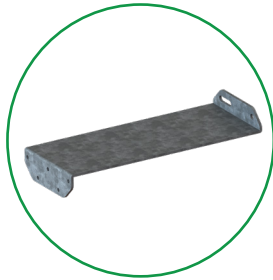
- PIL-BRKT-GR (1)
- RING20X3 (1)
- CPLR-SET-GR (2)
- PFILL-GR (4)

Maximum Piling Diameter-16"

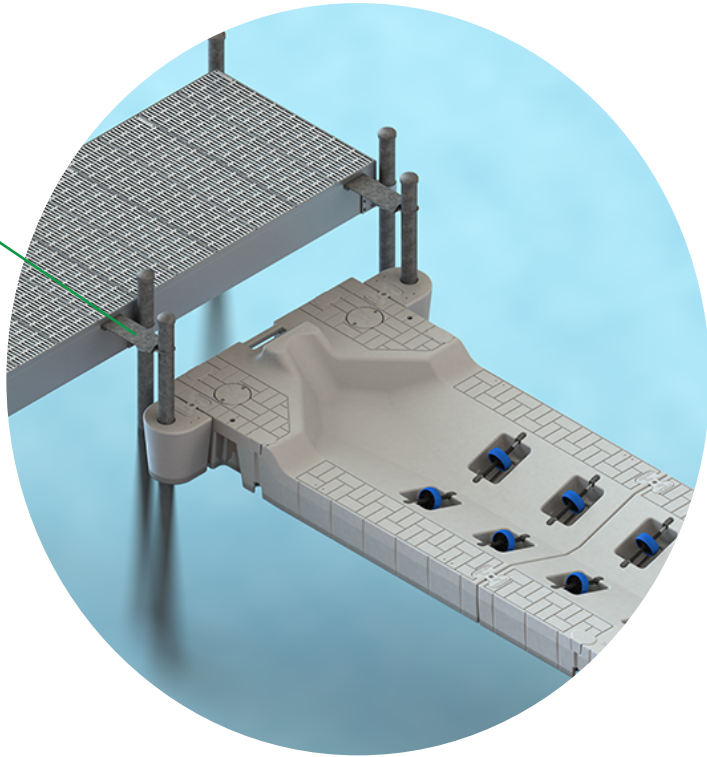
The design incorporates a replaceable wear ring and six pockets to adjust the bracket in 6.5" increments.



Stand Off Brackets



-or-



Stand Off Bracket:

- SO BRKT
- Grainger Item # 30LX64

To purchase the stand off bracket, visit [Grainger's website](#).

"Z" Pipe Stand Off Bracket:

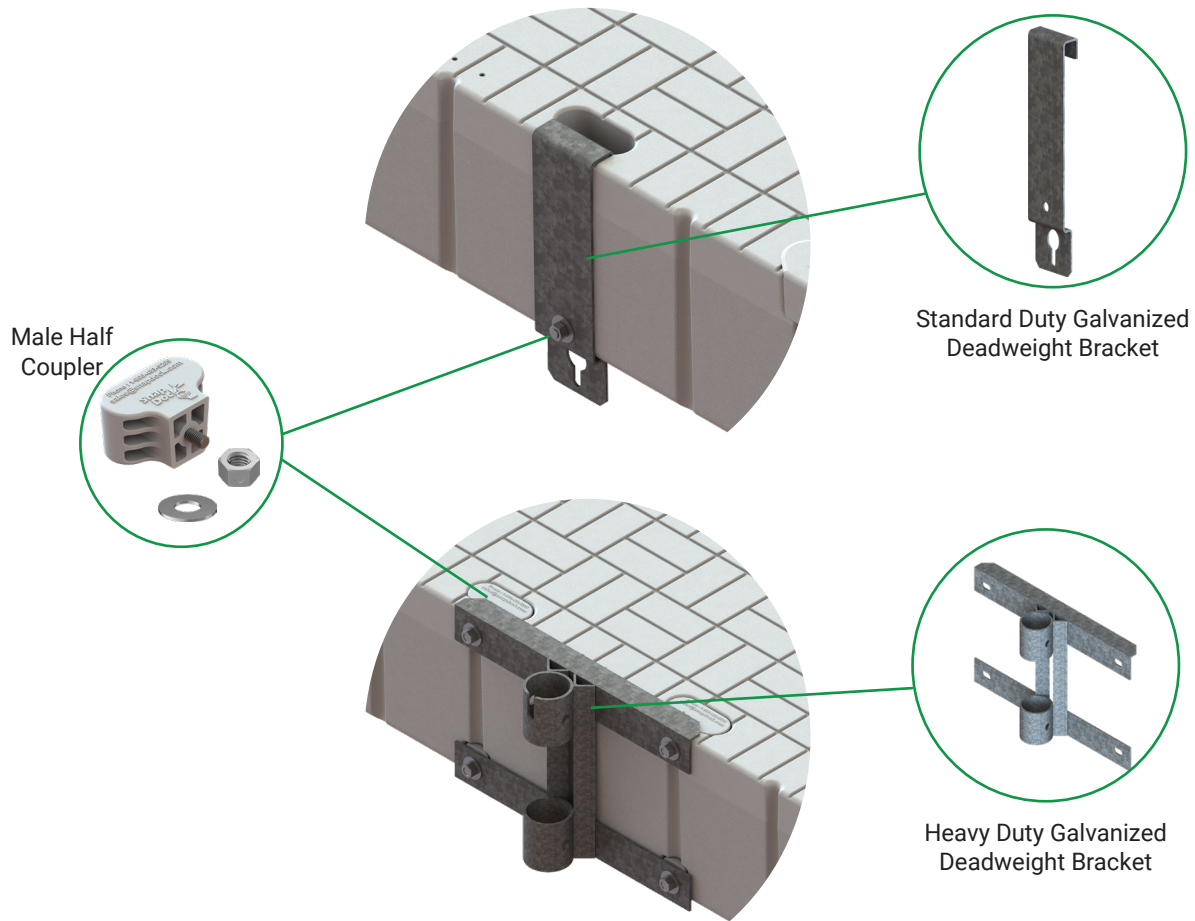
- SO Z BRKT (1)
- 5/16" U Bolt* (1)
- Lock Nut* (2)

Note: Screws up to 1/4" can be used to mount the "Z" bracket.

**Installation hardware is buyer's responsibility*



Deadweight Brackets



Male Half Coupler

Standard Duty Galvanized Deadweight Bracket

Heavy Duty Galvanized Deadweight Bracket

Standard Duty Galvanized Deadweight Bracket:

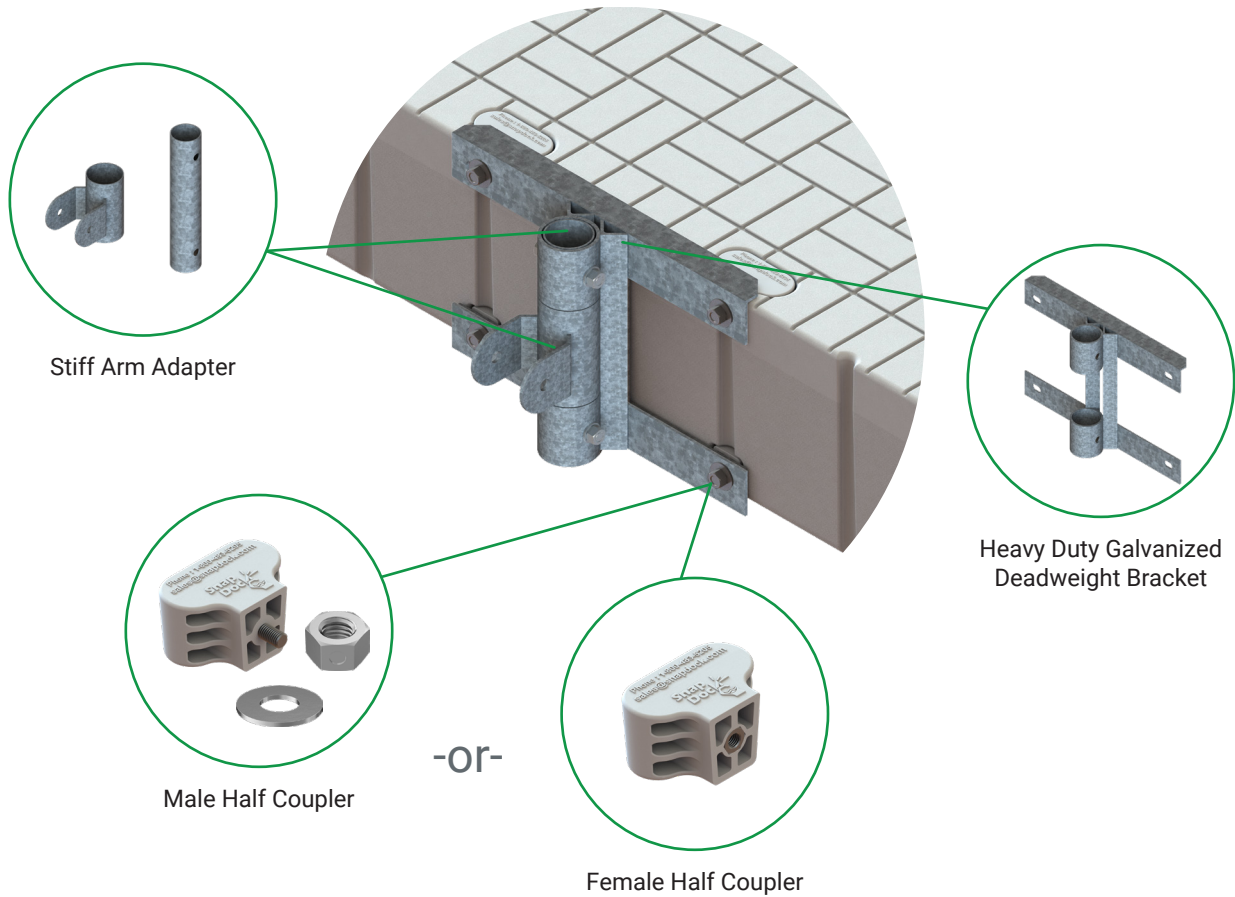
- ANCR-ASSY (1)
- HALFCLPR-GR-ASSY (1)

Heavy Duty Galvanized Deadweight Bracket:

- ANCR-PIPE (1)

Half Couplers Sold Separately

Stiff Arm Assembly



Stiff Arm Assembly:

- ANCR-PIPE (1)
- STIF-ADPT (1)
- HALFCLPR-GR-ASSY (4)

Stiff Arm Adapter:

- STIF-ADPT (1)
- LOCKNUT-N*
- WASHER*
- BOLT (McMaster # 92186A812)*

**Installation hardware is buyer's responsibility*



Snap Dock Builder Tutorial

The Snap Dock Builder allows customers to configure their own dock layout which can then be shared with a dealer.

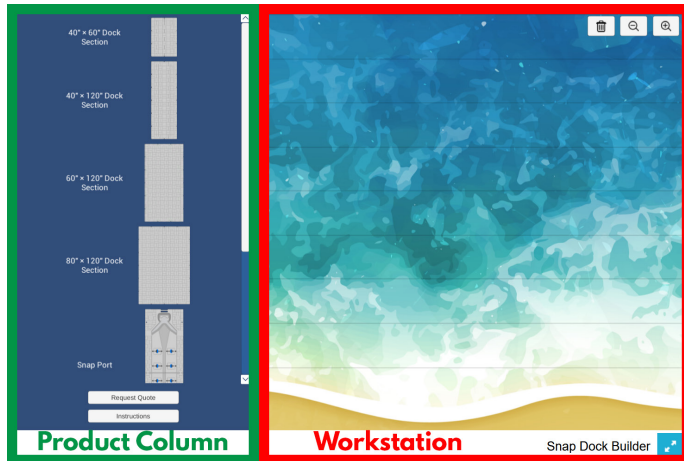


Figure 1 illustrates the initial screen an end user or dealer sees when clicking on the **Snap Dock Builder** tab on our website.

The **Product Column** outlined in **RED** identifies Snap Dock Products that make up a dock layout.

The **Workstation** is outlined in **GREEN**, which identifies the area in which items will appear to construct a draft layout.

Figure 2 illustrates a 60" dock section that is selected to start a dock layout.

To choose a product, hover the mouse pointer over the desired item, then *single-click* to place it into the Workstation.

Note: Keep in mind that selecting an item multiple times will create the same number of items in the work station. If unwanted items populate, drag the item to the trash can icon to dispose of object.

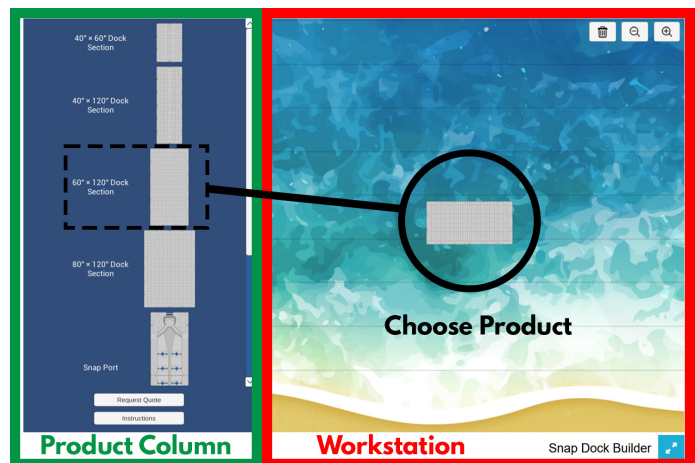


Figure 2



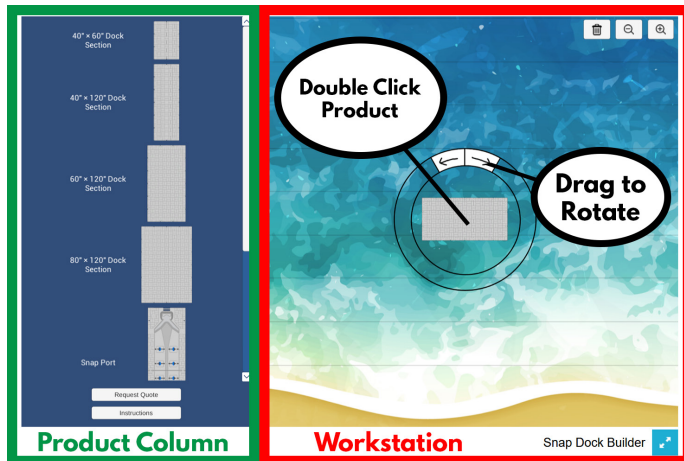


Figure 3

Figure 3 illustrates how to rotate a 60" component once it is in the Workstation.

To rotate an object, the user needs to double-click directly on the product. The circular rotational tool will appear as two circles with opposite directional arrows. Users need to use the cursor to click and drag the item in a circular motion for the preferred angle.

Figure 4 illustrates how a drafted layout will be presented using the **Snap Dock Builder** application tool.

For end users, a Request Quote button will appear under the Product column. This option allows the user to send the completed draft layout to the sales team to receive a quote.

Dealers can create a screenshot of the Snap Dock Builder after completing a draft. This will create a image to share with the customer.

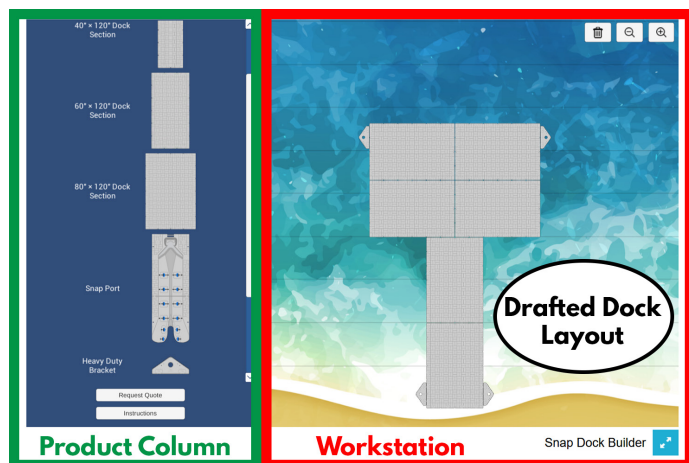
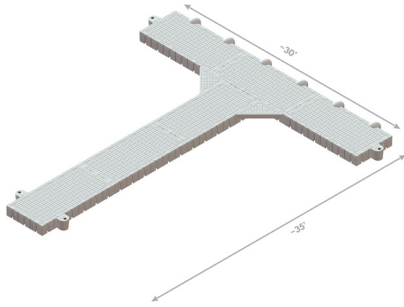


Figure 4

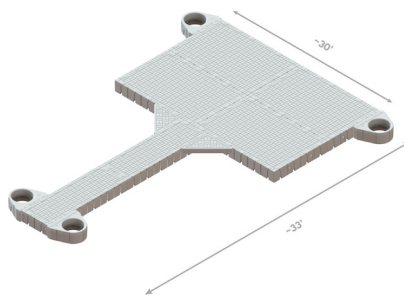


Residential Layouts



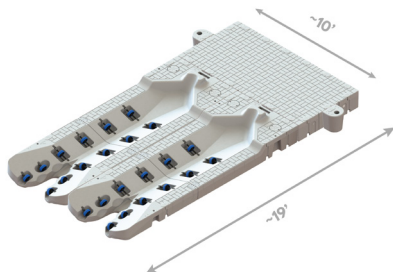
" T " FLOATING DOCK

SNAP120X60-GR-ASSY	6
BUMPER-GR-ASSY	6
CORNER-GR-ASSY	2
STD-BRKT-GR-ASSY	4
CPLR-SET-GR	15



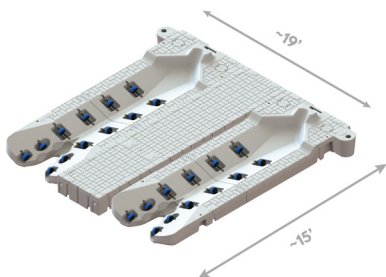
PLATFORM FLOATING DOCK

SNAP120X80-GR	4
SNAP120X40-GR-ASSY	2
CORNER-GR-ASSY	2
PIL-BRKT-GR-ASSY	4
CPLR-SET-GR	28



MULTI PORT AND 60" DOCK CONFIGURATION

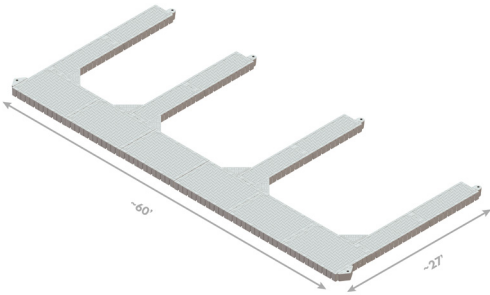
SNAP120X60-GR-ASSY	1
SNAP PORT60-GR-ASSY	2
STD-BRKT-GR-ASSY	2
CPLR-SET-GR	6



MULTI PORT AND 40" DOCK CONFIGURATION

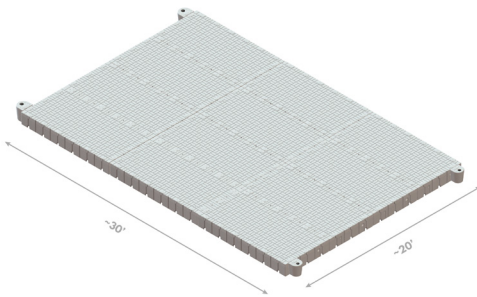
SNAP120X40-GR-ASSY	1
SNAP60X40-GR-ASSY	1
SNAP PORT60-GR-ASSY	2
CPLR-SET-GR	6

Commercial Layouts



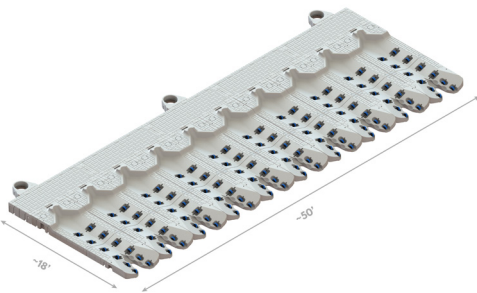
" U " SHAPE MULTI-SLIP DOCK

SNAP120X80-GR-ASSY	6
SNAP120X40-GR-ASSY	8
CORNER-GR-ASSY	6
STD-BRKT-GR-ASSY	4
HD-BRKT-GR-ASSY	2
CPLR-SET-GR	36



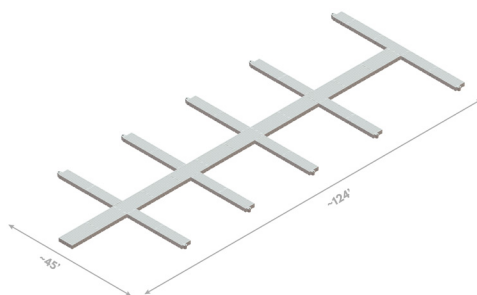
PLATFORM FLOATING DOCK

SNAP120X60-GR-ASSY	12
STD-BRKT-GR-ASSY-ASSY	4
CPLR-SET-GR	78



MULTI-SLIP SNAP PORT DOCK

SNAP120X40-GR-ASSY	5
SNAP PORT60-GR-ASSY	10
PIL-BRKT-GR-ASSY	3
CPLR-SET-GR	38

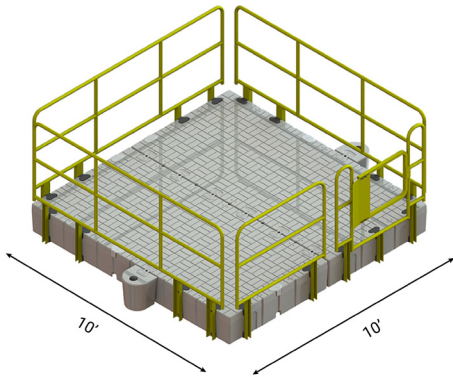


MULTI-SLIP MARINA

SNAP120X60-GR-ASSY	12
SNAP120X40-GR-ASSY	20
SNAP60X40-GR-ASSY	1
STD-BRKT-GR-ASSY-ASSY	10
CPLR-SET-GR	76

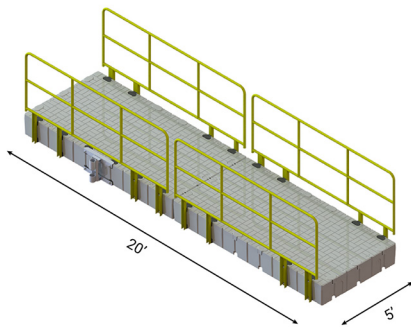


Industrial Applications



WORK PLATFORM

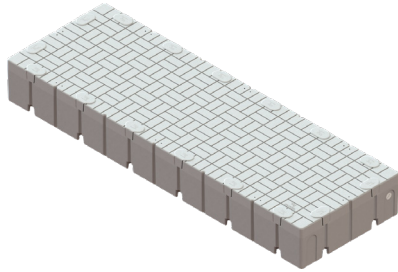
SNAP120X60-GR-ASSY	2
STD-BRKT-GR-ASSY-ASSY	2
CPLR-SET-GR	6
HALFCPLR-GR-ASSY	34
HR-111-YELLOW	3
HR-52-YELLOW	1
HR-52-G-YELLOW	1
HR-SG-YELLOW	1



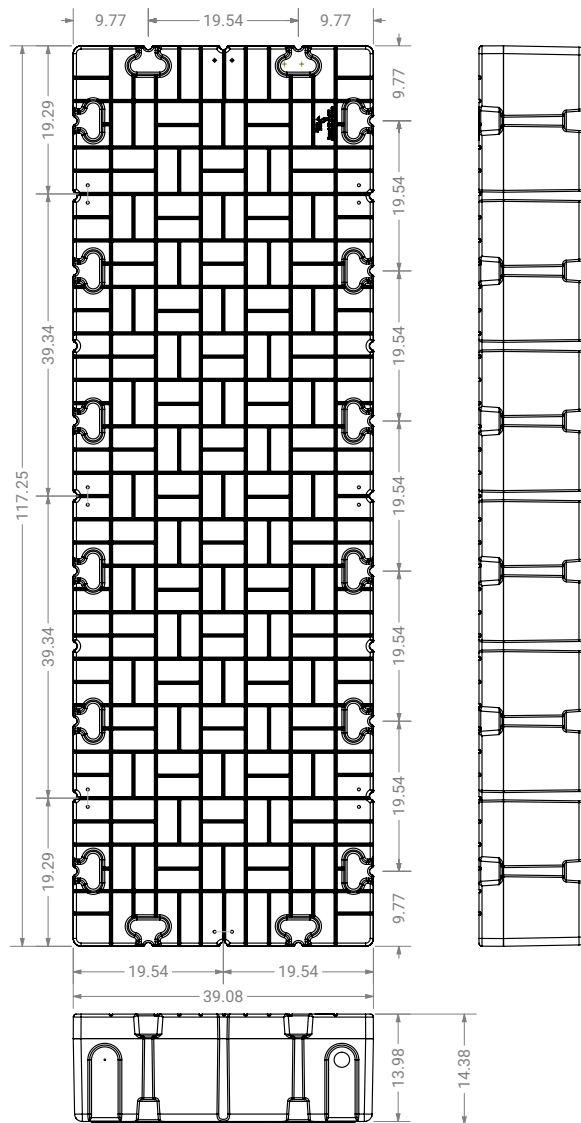
WALKWAY

SNAP120X60-GR-ASSY	2
CPLR-SET-GR	3
HALFCPLR-GR-ASSY	32
HR-111-YELLOW	4

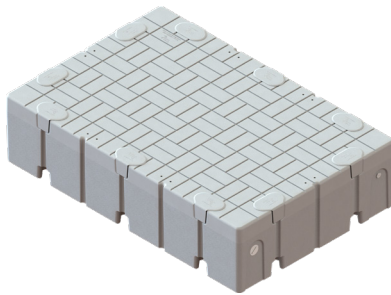
40" x 120" Dock Section



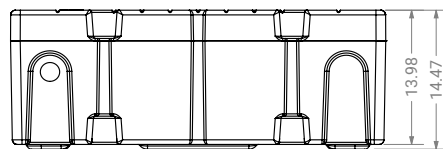
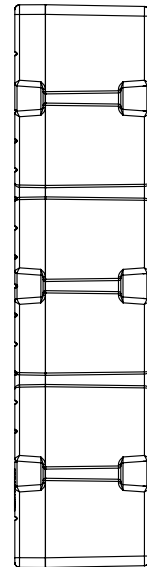
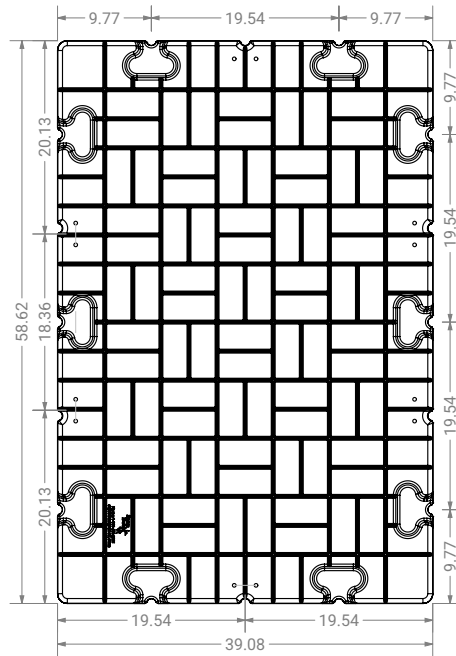
Material	Linear Low-Density Polyethene (LLDPE)
Color Options	Light Gray or Tan (Special Order)
Weight	178 lbs / 81 kg
Capacity	2150 lbs / 975 lbs
T-Nut Quantity	16, 5/16"-18X0.375" 316SS
Adjustability	19.5" OC
SKU	SNAP120X40-GR-ASSY



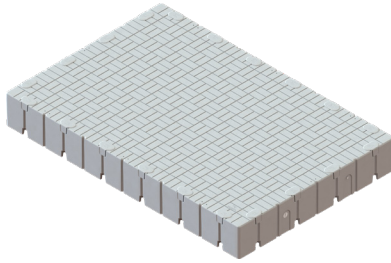
40"x 60" Dock Section



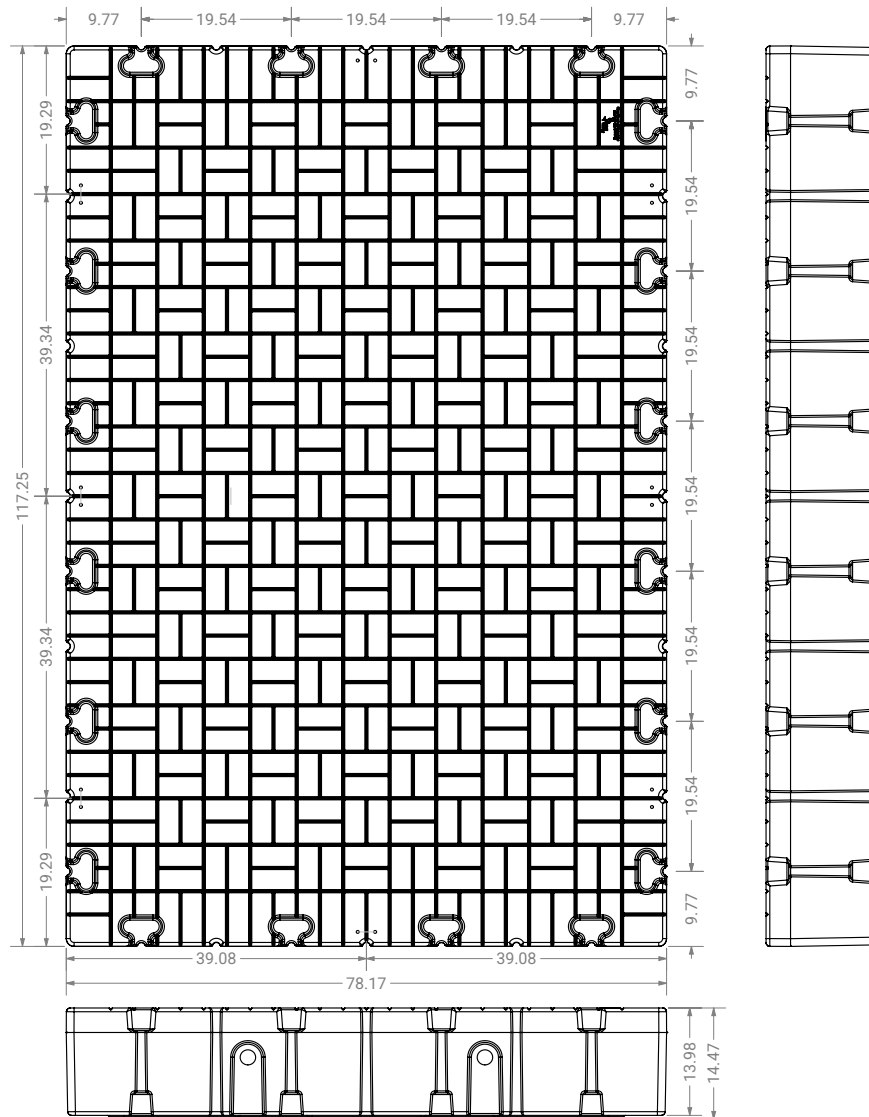
Material	Linear Low-Density Polyethylene (LLDPE)
Color Options	Light Gray or Tan (Special Order)
Weight	119 lbs / 54 kg
Capacity	997 lbs / 453 kg
T-Nut Quantity	12, 5/16"-18X0.375" 316SS
Adjustability	19.5" OC
SKU	SNAP60X40-GR-ASSY



80"x 120" Dock Section



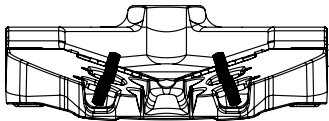
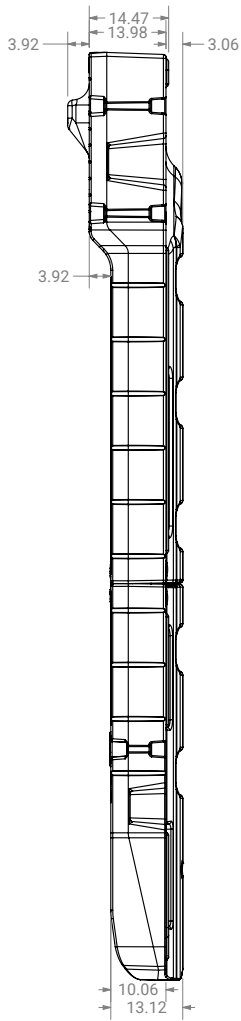
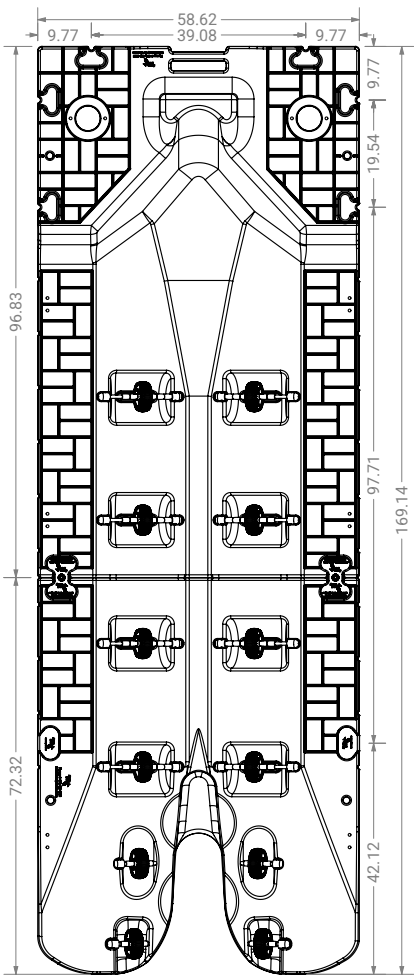
Material	Linear Low-Density Polyethene (LLDPE)
Color Options	Light Gray or Tan (Special Order)
Weight	330 lbs / 150 kg
Capacity	4224 lbs / 1916 kg
T-Nut Quantity	16, 5/16"-18X0.375" 316SS
Adjustability	19.5" OC
SKU	SNAP120X60-GR-ASSY



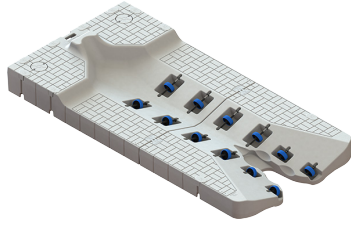
Snap Port 60



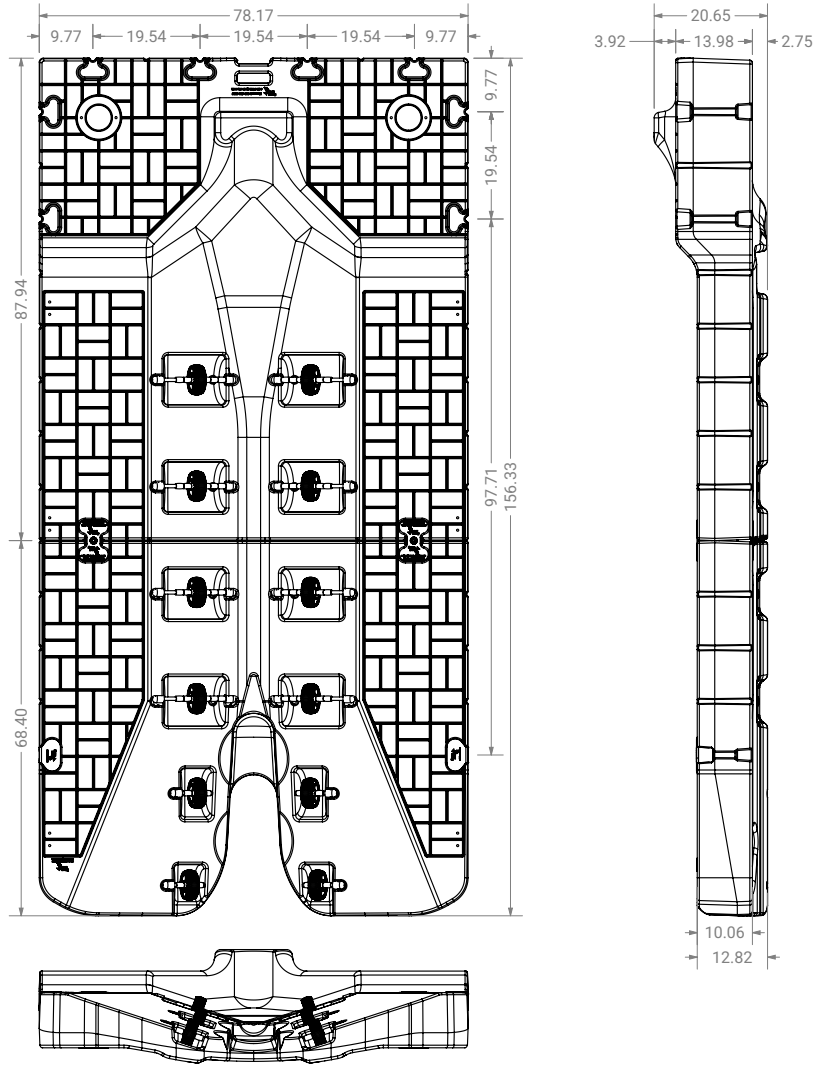
Material	Linear Low-Density Polyethylene (LLDPE)
Color Options	Light Gray or Tan (Special Order)
Weight	381 lbs / 173 kg
Operating Capacity	1750 lbs / 794 kg
T-Nut Quantity	16, 5/16"-18X0.375" 316SS
Adjustability	19.5" OC
SKU	SNAP PORT60-GR-ASSY



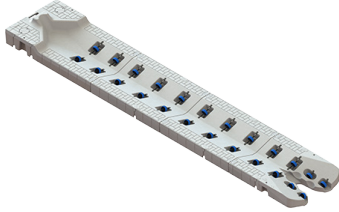
Snap Port 80



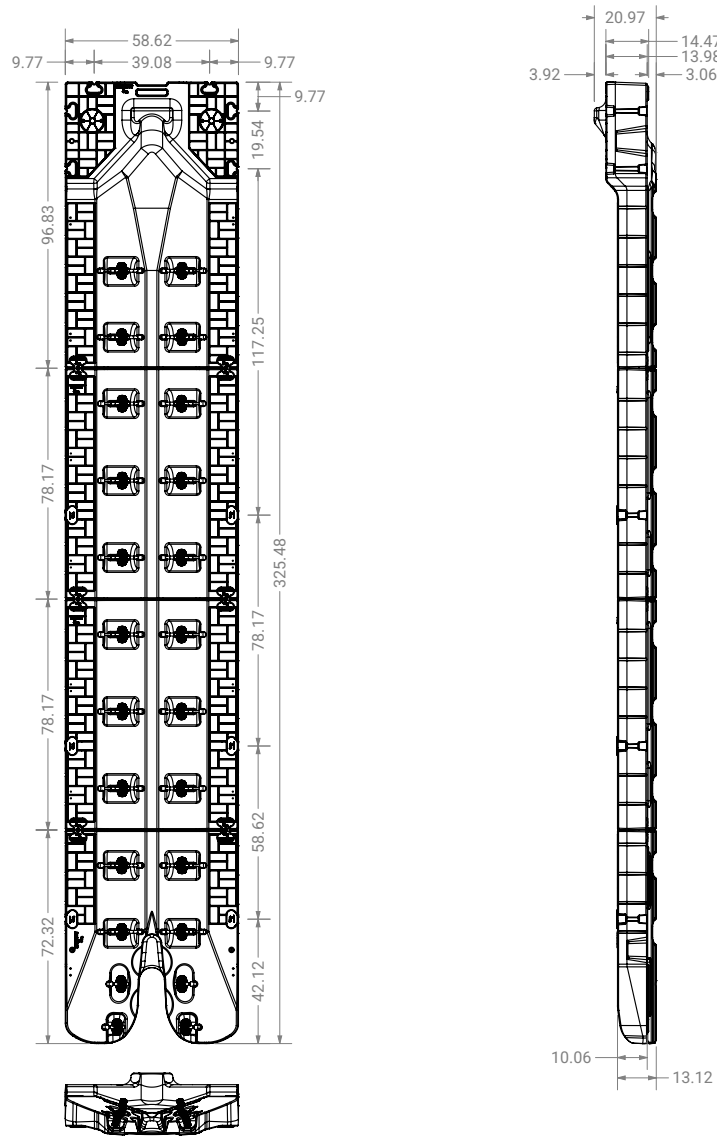
Material	Linear Low-Density Polyethene (LLDPE)
Color Options	Light Gray or Tan (Special Order)
Weight	427 lbs / 194 kg
Operating Capacity	1883 lbs / 855 kg
T-Nut Quantity	16, 5/16"-18X0.375" 316SS
Adjustability	19.5" OC
SKU	SNAP PORT80-GR-ASSY



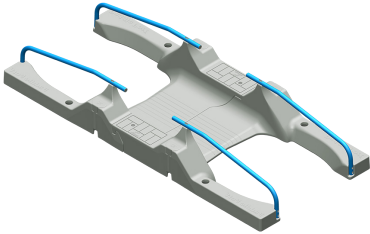
Snap Port Inline



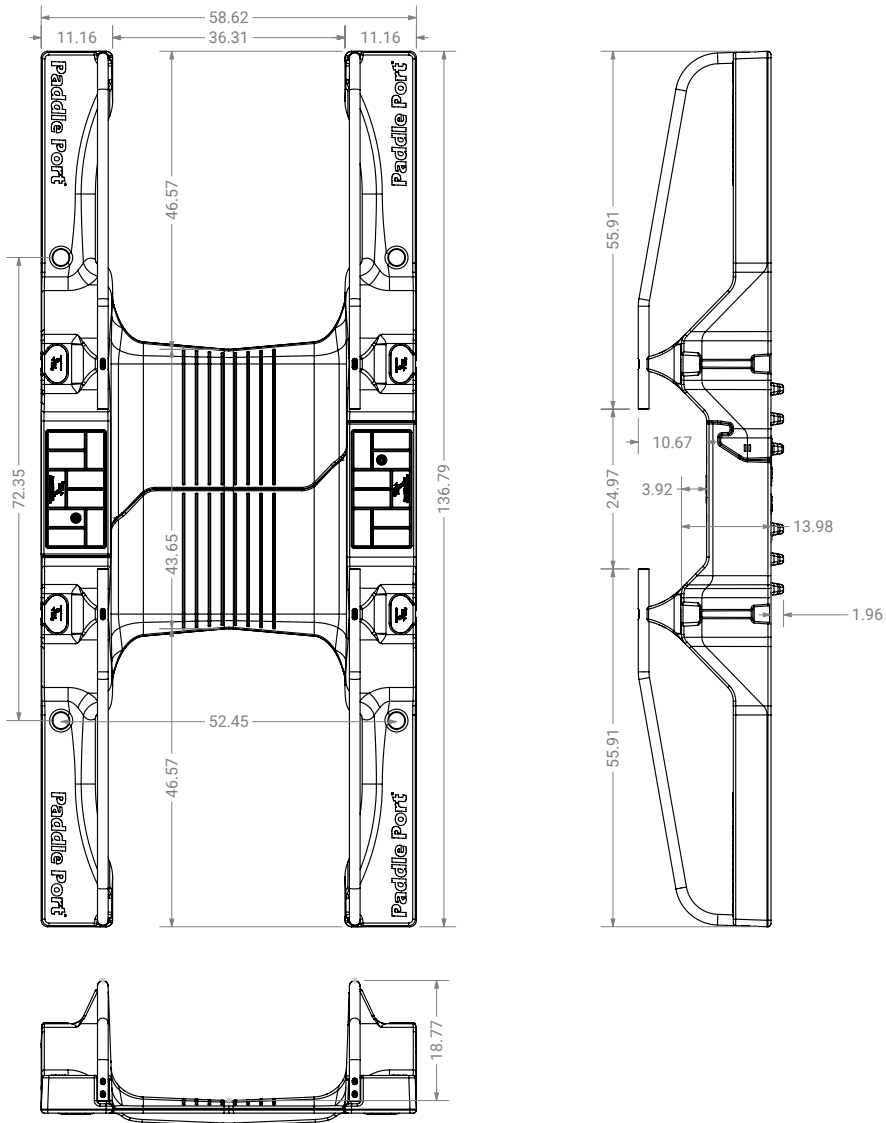
Material	Linear Low-Density Polyethylene (LLDPE)
Color Options	Light Gray or Tan (Special Order)
Weight	729 lbs / 331 kg
Operating Capacity	2460 lbs / 1116 kg
T-Nut Quantity	24, 5/16"-18X0.375" 316SS
Adjustability	19.5" OC
SKU	SNAP PORT INLINE-GR-ASSY



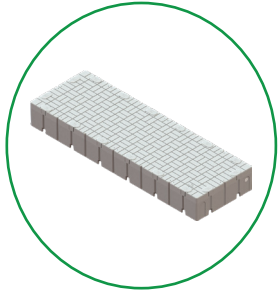
Paddle Port



Material	Linear Low-Density Polyethene (LLDPE)
Color Options	Light Gray or Tan (Special Order)
Weight	160 lbs / 73 kg
Capacity	500 lbs / 227 kg
T-Nut Quantity	12, 5/16"-18X0.375" 316SS
Adjustability	19.5" OC
SKU	PADDLE PORT-GR-ASSY



Plastic Products



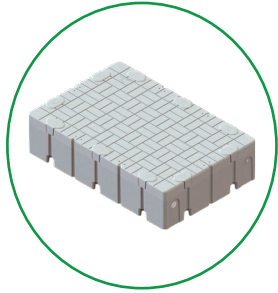
40" x 120" Dock Section

SKU: SNAP120X40-GR-ASSY

Dimensions: 117" x 39"

Description:

(1) 40" dock section (light gray), and (12) pocket fillers



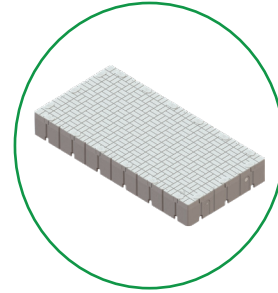
40" x 60" Dock Section

SKU: SNAP60X40-GR-ASSY

Dimensions: 59" x 39"

Description:

(1) 40" x 60" dock section (light gray), and (6) pocket fillers



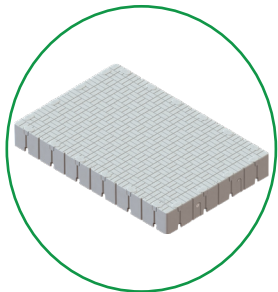
60" x 120" Dock Section

SKU: SNAP120x60-GR-ASSY

Dimensions: 117" x 59"

Description:

(1) 60" dock section (light gray), and (12) pocket fillers



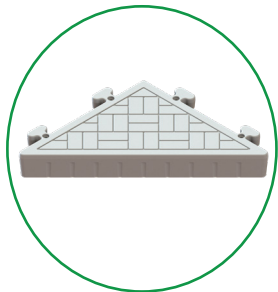
80" x 120" Dock Section

SKU: SNAP120X80-GR-ASSY

Dimensions: 117" x 79"

Description:

(1) 80" dock section (light gray), and (12) pocket fillers



Corner Gusset

SKU: CORNER-GR-ASSY

Dimensions: N/A

Description:

(1) corner gusset (light gray), and (1) corner gusset bolt kit



Snap Port 60

SKU: SNAP PORT60-GR-ASSY

Dimensions: 168" x 59"

Description:

(1) snap port assembly (light gray). See [page 19](#) for assembly hardware.





Port 60 Entrance

SKU: PORT60 ENT-GR-ASSY

Dimensions: 72" x 59"

Description:

(1) port entrance (light gray), (4) port roller long set, (4) port roller short sets, and (2) pocket fillers



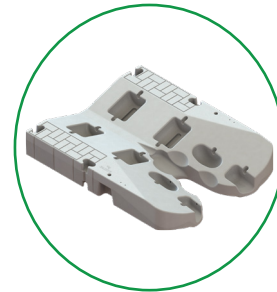
Port 60 Front

SKU: PORT60 FRONT-GR-ASSY

Dimensions: 96" x 59"

Description:

(1) port front (light gray), (4) port roller long set, (1) port cover kit, and (6) pocket fillers



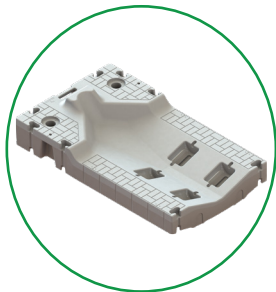
Port 60 Entrance

SKU: PORT60 ENT-GR

Dimensions: 72" x 59"

Description:

(1) port entrance (light gray)



Port 60 Front

SKU: PORT60 FRONT-GR

Dimensions: 96" x 59"

Description:

(1) port front (light gray)



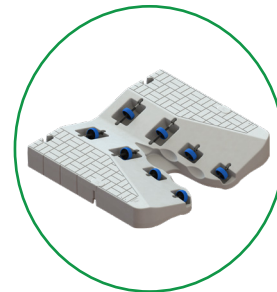
Snap Port 80

SKU: SNAP PORT80-GR-ASSY

Dimensions: 156" x 79"

Description:

(1) snap port 80 assembly (light gray). See [page 20](#) for assembly hardware.



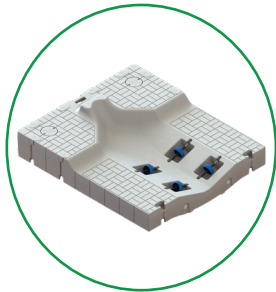
Port 80 Entrance

SKU: PORT80 ENT-GR-ASSY

Dimensions: 79" x 79"

Description:

(1) port 80 entrance (light gray), (4) port roller long set, (4) port roller short sets, and (2) pocket fillers



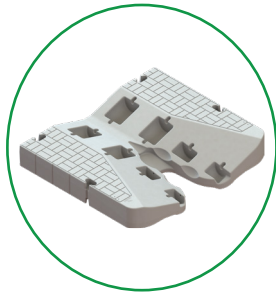
Port 80 Front

SKU: PORT80 FRONT-GR-ASSY

Dimensions: 79" x 79"

Description:

(1) port 80 front (light gray), (4) port roller long set, (1) port cover kit, and (6) pocket fillers



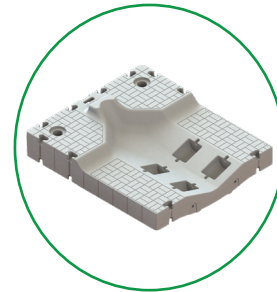
Port 80 Entrance

SKU: PORT80 ENT-GR

Dimensions: 79" x 79"

Description:

(1) port 80 entrance (light gray)



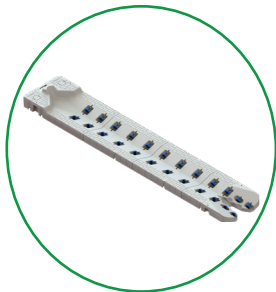
Port 80 Front

SKU: PORT80 FRONT-GR

Dimensions: 79" x 79"

Description:

(1) port 80 front (light gray)



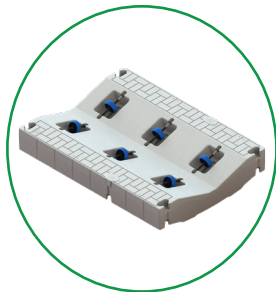
Snap Port Inline

SKU: SNAP PORT INLINE-GR-ASSY

Dimensions: 326" x 59"

Description:

(1) snap port assembly (light gray). See [page 21](#) for assembly hardware.



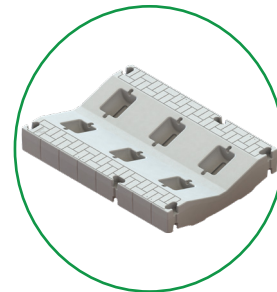
Snap Port Extension

SKU: SNAP PORT EXT-GR-ASSY

Dimensions: 59" x 79"

Description:

(1) snap port extension (light gray), (2) port coupler sets, (2) pocket fillers and (6) port roller long set



Snap Port Extension

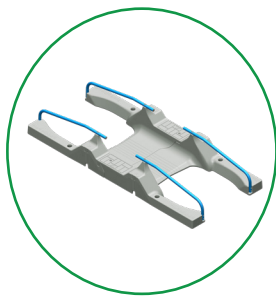
SKU: SNAP PORT EXT-GR

Dimensions: 59" x 79"

Description:

(1) snap port extension (light gray)





Paddle Port Assembly

SKU: PADDLE PORT-GR-ASSY

Dimensions: 137" x 58.5"

Description:

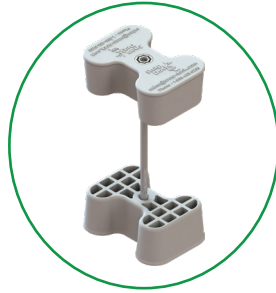
(1) paddle port assembly (light gray) includes (2) paddle port entry (2) couplers, (2) port coupler bolt kits, (4) handrails, & (1) handrail hardware bag

Connector Products



Coupler

SKU: CPLR-GR
 Dimensions: N/A
 Description:
 (1) coupler (light gray)



Full Coupler Set

SKU: CPLR-SET-GR
 Dimensions: N/A
 Description:
 (2) couplers (light gray), (1) long bolt, (1) coupler nut, and (1) drive tool



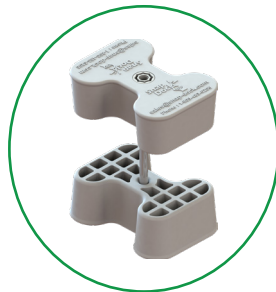
Female Half Coupler

SKU: HALFCPLR-F-GR-ASSY
 Dimensions: N/A
 Description:
 (1) female half coupler (light gray)



Male Half Coupler

SKU: HALFCPLR-GR-ASSY
 Dimensions: N/A
 Description:
 (1) male half coupler (light gray), (1) washer, and (1) nylon locknut



Port Coupler Set

SKU: CPLR-PORT-GR
 Dimensions: N/A
 Description:
 (2) couplers (light gray), (1) port coupler short bolt, (1) coupler nut, and (1) drive tool



Corner Gusset Bolt Kit

SKU: CBOLT-KIT-GR
 Dimensions: N/A
 Description:
 (4) corner gusset bolts, (4) coupler nuts, and (1) drive tool





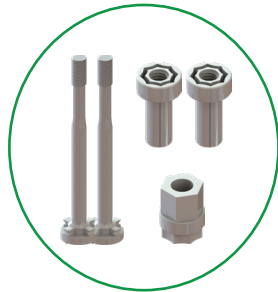
Coupler Bolt Kit

SKU: BOLT-KIT-GR

Dimensions: N/A

Description:

(1) coupler long bolt, (1) coupler nut, and (1) drive tool



Port Coupler Bolt Kit

SKU: BOLT-S-KIT-GR

Dimensions: N/A

Description:

(2) port coupler short bolts, (2) coupler nuts, and (1) drive tool



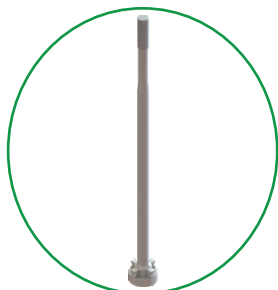
Corner Gusset Bolt

SKU: CBOLT-GR

Dimensions: N/A

Description:

(1) corner gusset bolt



Coupler Long Bolt

SKU: BOLT-L-GR

Dimensions: N/A

Description:

(1) coupler long bolt



Drive Tool

SKU: DRIVETOOL

Dimensions: N/A

Description:

(1) drive tool



Coupler Nut

SKU: NUT-GR

Dimensions: N/A

Description:

(1) coupler nut



Port Coupler Short Bolt

SKU: BOLT-S-GR

Dimensions: N/A

Description:

(1) port coupler short bolt



Anchoring



Heavy Duty Pipe Bracket

SKU: HD-BRKT-GR-ASSY

Dimensions: N/A

Description:

(1) heavy duty pipe bracket (light gray), and (2) full coupler sets



Light Duty Pipe Bracket

SKU: LTD-BRKT-GR-ASSY

Dimensions: N/A

Description:

(1) light duty pipe bracket, and (1) full coupler set



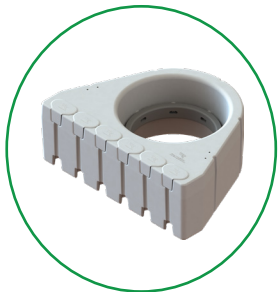
Low Profile Pipe Bracket

SKU: LOW-BRKT-GR-ASSY

Dimensions: N/A

Description:

(1) low profile pipe bracket, and (1) full coupler set



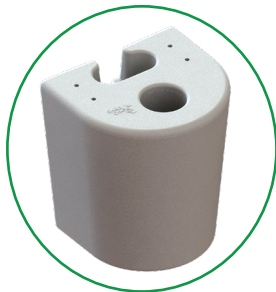
Piling Bracket

SKU: PIL-BRKT-GR-ASSY

Dimensions: N/A

Description:

(1) piling bracket (light gray), (1) replaceable wear ring, (2) full coupler sets, and (4) pocket fillers



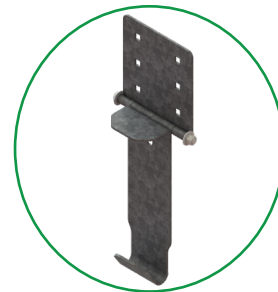
Standard Duty Pipe Bracket

SKU: STD-BRKT-GR-ASSY

Dimensions: N/A

Description:

(1) standard duty pipe bracket (light gray), and (1) full coupler set



8" Galvanized Hinge Kit

SKU: HINGE-KIT-GALV-S-ASSY

Dimensions: N/A

Description:

(1) 8" galvanized hinge kit, set of 2, and (2) male half couplers.



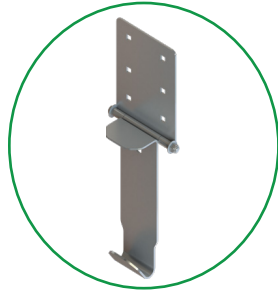
10" Galvanized Hinge Kit

SKU: HINGE-KIT-GALV-ASSY

Dimensions: N/A

Description:

(1) 10" galvanized hinge kit, set of 2, and (2) male half couplers.



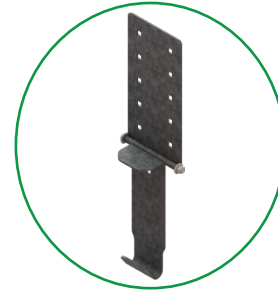
10" Stainless Steel Hinge Kit

SKU: HINGE-KIT-SS-ASSY

Dimensions: N/A

Description:

(1) 10" stainless steel hinge kit, set of 2, and (2) male half couplers.



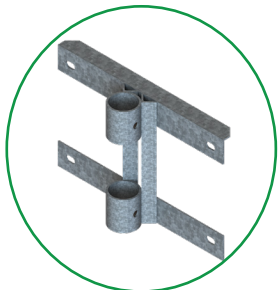
16" Galvanized Hinge Kit

SKU: HINGE-KIT-GALV-XL-ASSY

Dimensions: N/A

Description:

(1) 16" galvanized hinge kit, set of 2, and (2) male half couplers.



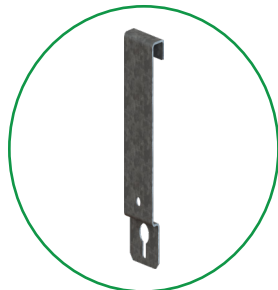
Heavy Duty Galvanized Deadweight Bracket

SKU: ANCR-PIPE

Dimensions: N/A

Description:

(1) heavy duty galvanized deadweight bracket. Order with (4) male half couplers.



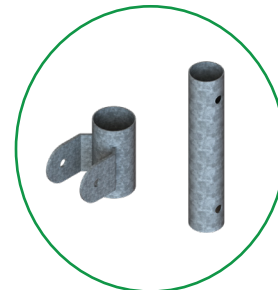
Standard Duty Galvanized Deadweight Bracket

SKU: ANCR-ASSY

Dimensions: N/A

Description:

(1) standard duty galvanized deadweight bracket. Order with (1) male half coupler.



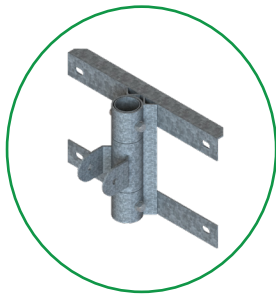
Stiff Arm Adapter

SKU: STIF-ADPT

Dimensions: N/A

Description:

(1) stiff arm adapter



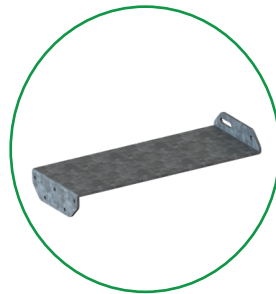
Stiff Arm Assembly

SKU: STIF-ASSY

Dimensions: N/A

Description:

(1) heavy duty galvanized deadweight bracket and (1) stiff arm adapter. Order with (4) male half couplers



" Z " Pipe Stand Off Bracket

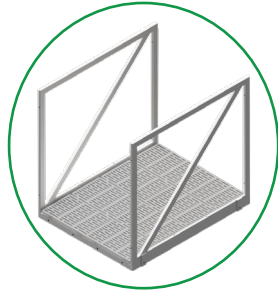
SKU: SO Z BRKT

Dimensions: N/A

Description:

(1) "z" pipe stand off bracket

Gangways and Ramps



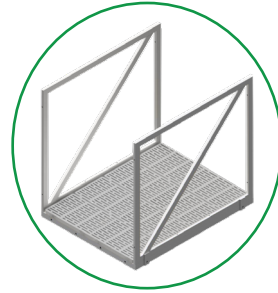
3' x 4' Modular Gangway

SKU: GRAMP-3X4-C-ASSY

Dimensions: 3' x 4'

Description:

(1) 3' x 4' modular gangway and composite decking (snap decking)



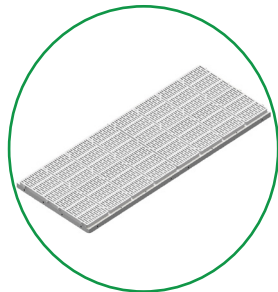
4' x 4' Modular Gangway

SKU: GRAMP-4X4-C-ASSY

Dimensions: 4' x 4'

Description:

(1) 4' x 4' modular gangway and composite decking (snap decking)



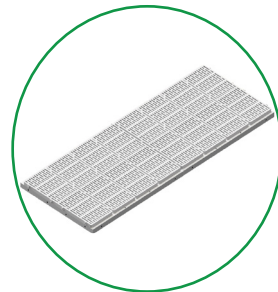
3' x 8' Ramp

SKU: RAMP-3x8-ASSY

Dimensions: 3' x 8'

Description:

(1) 3' x 8' ramp and composite decking (snap decking)



4' x 8' Ramp

SKU: RAMP-4x8-ASSY

Dimensions: 4' x 8'

Description:

(1) 4' x 8' ramp and composite decking (snap decking)



Accessories



3' Abutment Hinge

SKU: HINGE-A3
Dimensions: N/A
Description:
(1) 3' abutment hinge



4' Abutment Hinge

SKU: HINGE-A4
Dimensions: N/A
Description:
(1) 4' abutment hinge



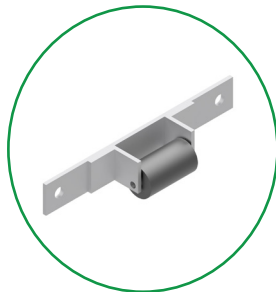
3' Gangway Hinge (2-Pocket)

SKU: GHINGE-2P3-ASSY
Dimensions: N/A
Description:
(1) 2-pocket bolt-on dock hinge for a 3' gangway or ramp, (2) female half couplers



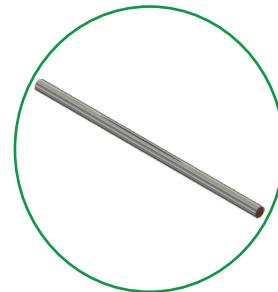
4' Gangway Hinge (3-Pocket)

SKU: GHINGE-3P4-ASSY
Dimensions: N/A
Description:
(1) 3-pocket bolt-on dock hinge for a 4' gangway or ramp, (3) female half couplers



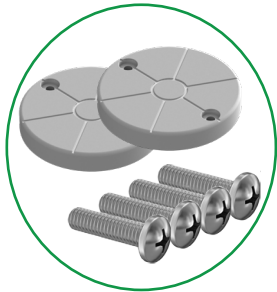
Gangway Roller

SKU: GROLLER-KIT
Dimensions: N/A
Description:
(2) 4' gangway roller assembly and (2) bags of roller assembly hardware



Long Stainless Steel Axis

SKU: SBAR-15
Dimensions: N/A
Description:
(1) long stainless steel axis



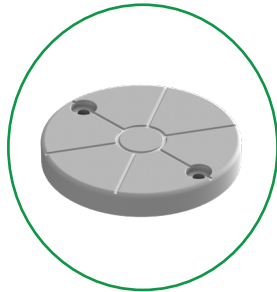
Port Cover Kit

SKU: PORT COVER-GR-ASSY

Dimensions: N/A

Description:

(2) port covers (light gray), and (4) 5/16"-18 stainless 1-1/4" screws



Port Cover

SKU: PORT COVER-GR

Dimensions: N/A

Description:

(1) port cover (light gray)



Port Roller Long Set

SKU: ROLLER-L

Dimensions: N/A

Description:

(1) port roller wheel, (5) port spacers, (2) port roller plugs, and (1) long stainless steel axis



Port Roller Plug

SKU: PLUG

Dimensions: N/A

Description:

(1) port roller plug



Port Roller Long Set

SKU: ROLLER-L

Dimensions: N/A

Description:

(1) port roller wheel, (5) port spacers, (2) port roller plugs, and (1) long stainless steel axis



Port Roller Wheel

SKU: WHEEL

Dimensions: N/A

Description:

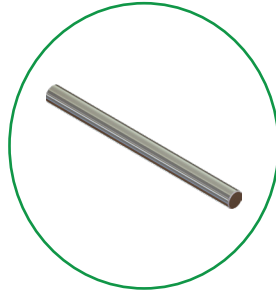
(1) port roller wheel





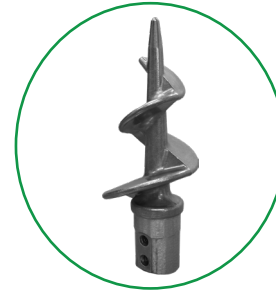
Port Spacer

SKU: SPACER
Dimensions: N/A
Description:
(1) port spacer



Short Stainless Steel Axis

SKU: SBAR-8
Dimensions: N/A
Description:
(1) short stainless steel axis



2" Pipe Auger

SKU: AUGER-2
Dimensions: N/A
Description:
(1) cast aluminum 2" pipe auger



4-Step Retractable Ladder

SKU: LADDER-4-ASSY
Dimensions: N/A
Description:
(1) 4-step retractable ladder, (2) J hooks, (2) female half couplers, and (1) bag of assembly hardware



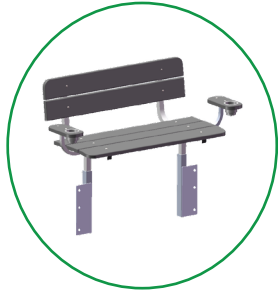
8" Nylon Cleat

SKU: CLEAT-8-ASSY
Dimensions: N/A
Description:
(1) 8" nylon cleat, and (2) 5/16" cleat screws



8" Solar Cleat Light

SKU: SLR-CLEAT-8-ASSY
Dimensions: N/A
Description:
(2) 8" solar cleat lights



Bench

SKU: BENCH-GR-ASSY

Dimensions: N/A

Description:

(1) bench assembly (light gray)



Breather Vent

SKU: VENT-L-GR

Dimensions: N/A

Description:

(1) M12x1.5 vent



Bumper

SKU: BUMPER-S-GR-ASSY

Dimensions: N/A

Description:

(1) bumper (light gray), (1) female half coupler, (1) washer, and (1) 3" stainless steel bolt



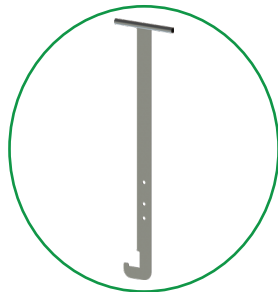
Dog Step Ladder

SKU: DSTEP-ASSY

Dimensions: N/A

Description:

(1) dog step ladder



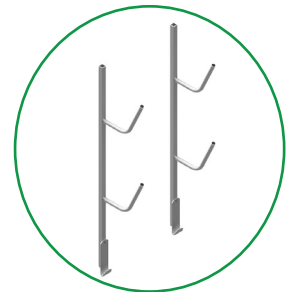
In-Water Installation Tool

SKU: SNAP INSTALL

Dimensions: N/A

Description:

(1) in-water installation tool



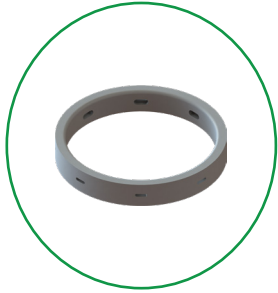
Kayak Rack

SKU: K-RACK-ASSY

Dimensions: N/A

Description:

(1) kayak rack



Piling Bracket Wear Ring

SKU: RING20X3

Dimensions: N/A

Description:

(1) piling bracket wear ring (black)



Pocket Filler

SKU: PFILL-GR

Dimensions: N/A

Description:

(1) pocket filler (light gray)



Amber Pocket Solar Light

SKU: CPLR LITE AM

Dimensions: N/A

Description:

(1) amber pocket solar lights, set of 2



Blue Pocket Solar Light

SKU: CPLR LITE BL

Dimensions: N/A

Description:

(1) blue pocket solar lights, set of 2



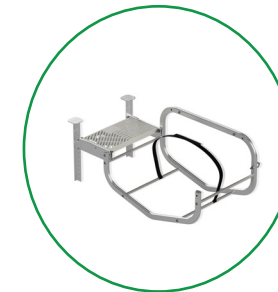
White Pocket Solar Light

SKU: CPLR LITE WH

Dimensions: N/A

Description:

(1) white pocket solar lights, set of 2



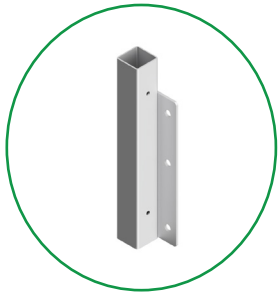
Stow & Go Kayak Launch

SKU: STOW&GO-ASSY

Dimensions: N/A

Description:

(1) stow & go kayak launch, and (2) male half coupler



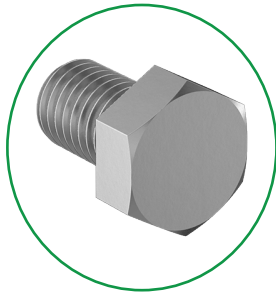
Umbrella Stand Sleeve

SKU: USTAND-ASSY

Dimensions: N/A

Description:

(1) umbrella stand sleeve includes
(1) male half coupler (light gray),
(1) washer, and (1) nylon locknut



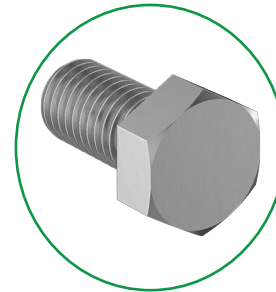
1" Stainless Steel Bolt

SKU: BOLT-1

Dimensions: N/A

Description:

(1) 5/8"-11 stainless steel
bolt x 1"



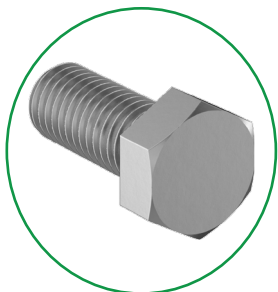
1.25" Stainless Steel Bolt

SKU: BOLT-1.25

Dimensions: N/A

Description:

(1) 5/8"-11 stainless steel
bolt x 1-1/4"



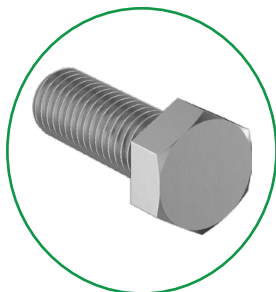
1.50" Stainless Steel Bolt

SKU: BOLT-1.5

Dimensions: N/A

Description:

(1) 5/8"-11 stainless steel
bolt x 1-1/2"



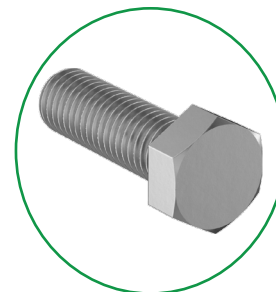
1.75" Stainless Steel Bolt

SKU: BOLT-1.75

Dimensions: N/A

Description:

(1) 5/8"-11 stainless steel
bolt x 1-3/4"



2" Stainless Steel Bolt

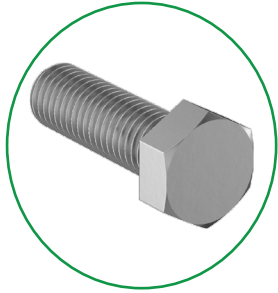
SKU: BOLT-2

Dimensions: N/A

Description:

(1) 5/8"-11 stainless steel
bolt x 2"

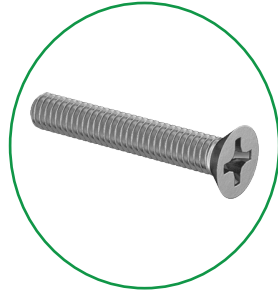
Hardware Products



3" Stainless Steel Bolt

SKU: BOLT-3
Dimensions: N/A

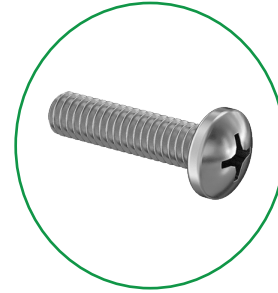
Description:
(1) 5/8"-11 stainless steel bolt x 3"



Cleat Screw

SKU: SCREW-CLT
Dimensions: N/A

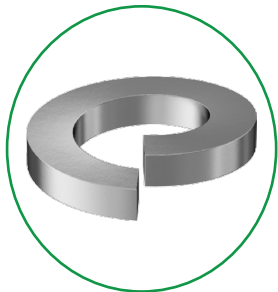
Description:
(2) 5/16"-18 stainless 2" cleat screws



Port Cover Screw

SKU: SCREW-COV
Dimensions: N/A

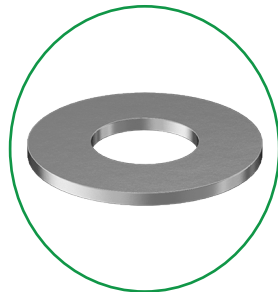
Description:
(2) 5/16"-18 stainless 1-1/4" port cover screws



Stainless Steel Lock Washer

SKU: WASHERL
Dimensions: N/A

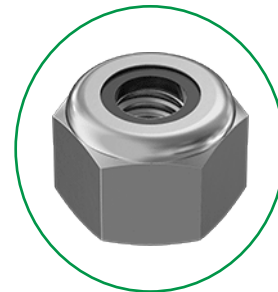
Description:
(1) 18-8 stainless steel lock washer for 5/8" screw size, 0.688" ID 1-1/2" OD



Stainless Steel Washer

SKU: WASHER
Dimensions: N/A

Description:
(1) 18-8 stainless steel washer for 5/8" screw size, 0.688" ID 1-1/2" OD



Nylon Locknut

SKU: LOCKNUT-N
Dimensions: N/A

Description:
(1) 5/8"-11 thread size nylon locknut

The New Decking Standard

Snap
Decking

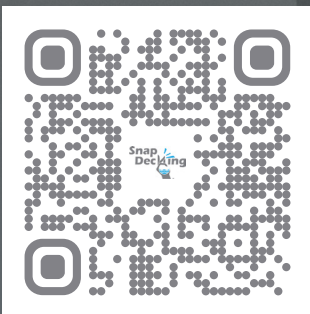


2'x5' Panel

2'x4' Panel

2'x3' Panel

1'x4' Panel



10 Year Limited Warranty

1. Limited Warranty Coverage

Snap Dock (“Manufacturer”) warrants to the original purchaser (“Purchaser”) of the Snap Dock Floating Dock System and its various products (“Product”) that, subject to the terms, conditions, and limitations set forth herein, that Flotation Products, including dock sections, PWC Port sections, etc. will be free from defects in materials (i.e. cracks, breakage, and leaks caused by defects in material) and workmanship under normal use and service for a period of ten (10) years from the original date of purchase (“Warranty Period”).

In addition, Accessories will have a one (1) year limited warranty from the original date of purchase (“Warranty Period”).

2. Product Registration Procedure

Buyer needs to register their new Product within 90 days from delivery to activate the 10-year limited warranty by completing the following steps:

2.1 Visit our product registration form on our website, labeled “Product Registration” under the “Resources” tab.

2.1.1 Product Registration Card can be found in the Owner’s Manual to be filled out and sent in by mail to the address below:

Snap Dock
2115 Rexford Rd.
Suite 215
Charlotte, NC 28211

2.2 Complete the online registration form, providing your name, contact information, product details, and images of Product installation.

2.3 Submit the registration form. You will receive a confirmation email once your registration is complete.

2.4 Keep your proof of purchase and warranty confirmation email in a safe place. You will need these documents if you ever need to make a warranty claim.

3. Warranty Conditions

This limited warranty is non-transferable and applies only to the original Purchaser. The warranty is conditional upon proper installation, use, maintenance, and inspection in accordance with the Manufacturer’s instructions and recommendations, as well as applicable local laws and regulations.

4. Warranty Exclusions

This limited warranty does not cover:

a. Normal wear and tear, including but not limited to improper installation; b. Damage caused by acts of God, including but not limited to storms, floods, lightning, and earthquakes; c. Damage caused by accidents, misuse, abuse, negligence, or failure to follow the Manufacturer’s instructions and recommendations; d. Damage caused by animals or aquatic life e. Damage caused by vandalism or theft; f. Damage caused by any unauthorized modifications or repairs to the Product; g. Damage caused by the use of incompatible accessories or components; h. Damage caused by settling, shifting, or movement of the ground, water, ice, or any other supporting structure; i. Labor or shipping costs for the removal, reinstallation, or replacement of the Product or any of its components.

5. Limited Remedy

In the event of a defect in materials or workmanship during the Warranty Period, the Manufacturer, at its sole discretion, will either:

a. Repair the defective Product or component with repair kit; b. Replace the defective Product or component with a replacement that is shipped at the Buyer’s and repaired and/or replaced products to the site; or c. Credit the original purchase price of the defective Product or component.

Any repaired or replaced Product or component will be warranted for the remainder of the original Warranty Period or ninety (90) days, whichever is longer.



6. Warranty Claim Procedure

To make a claim under this limited warranty, the Purchaser must:

The Purchaser must notify the Manufacturer of an alleged defect by completing the Claimant Online Submission Form within thirty (30) days of discovering the defect. The submission should include a description of the defect and proof of the original purchase date. The Manufacturer will issue a Warranty Claim Number (WCN) to the Purchaser upon receipt of the completed Claimant Online Submission Form. After issuing the WCN, the Manufacturer will determine, at its sole discretion, whether to repair or replace the failed product. Shipping is the sole responsibility of the Purchaser.

7. Limitation of Liability

To the extent permitted by law, the Manufacturer's liability under this limited warranty shall be limited to the repair, replacement, or credit of the defective Product or component as provided herein. In no event shall the Manufacturer be liable for any incidental, consequential, or special damage arising from the use, inability to use, or malfunction of the Product, even if the Manufacturer has been advised of the possibility of such damages.

8. No Other Warranties

This limited warranty is the sole and exclusive warranty provided by the Manufacturer for the Product and supersedes any prior warranties, whether written or oral. No other warranties, express or implied, including but not limited to any warranties of merchantability or fitness for a particular purpose, are provided by the Manufacturer. No agent, distributor, dealer, or other party is authorized to make any warranties on behalf of the Manufacturer or to modify the terms of this limited warranty.

9. Governing Law

This limited warranty shall be governed by and construed in accordance with the laws of the state of Indiana. Any disputes arising out of or relating to this limited warranty shall be resolved by arbitration or in a court of competent jurisdiction located in the state of Indiana.

10. Severability

If any provision of this limited warranty is found to be unenforceable or invalid, that provision shall be severed from this limited warranty, and the remainder of this limited warranty shall continue in full force and effect.

11. Modification or Waiver

No modification or waiver of any provision of this limited warranty shall be effective unless it is in writing and signed by an authorized representative of the Manufacturer. The failure of the Manufacturer to enforce any provision of this limited warranty shall not be construed as a waiver of such provision.

12. Transfer of Warranty

This limited warranty is non-transferable and applies only to the original Purchaser. Any transfer or assignment of this limited warranty or any rights or obligations hereunder shall be null and void.

13. Entire Agreement

This limited warranty constitutes the entire agreement between the Manufacturer and the Purchaser concerning the Product and supersedes all prior or contemporaneous communications, understandings, or agreements, whether written or oral, relating to the Product. No additional terms or conditions shall be binding upon the Manufacturer unless expressly agreed to in writing by an authorized representative of the Manufacturer.

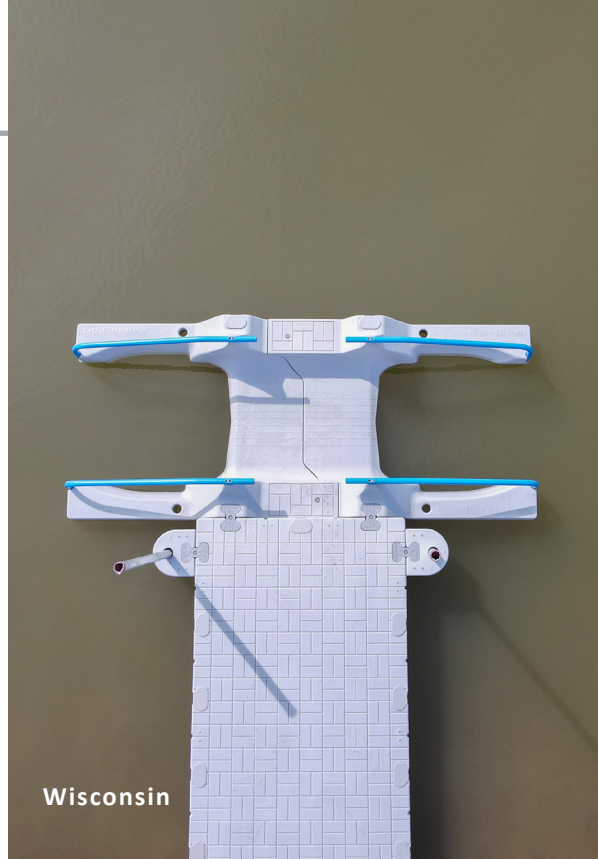
By purchasing the Product, the Purchaser acknowledges that they have read, understood, and agree to be bound by the terms and conditions of this 10 Year Limited Warranty.



Gallery



Mississippi



Wisconsin



Mississippi



Florida



New Jersey



Mississippi



New Jersey



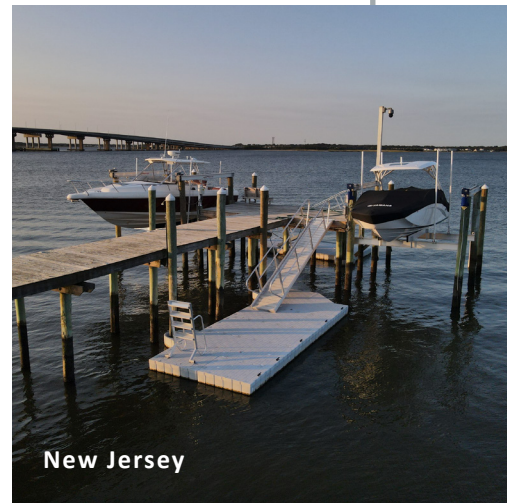
Michigan



Ohio



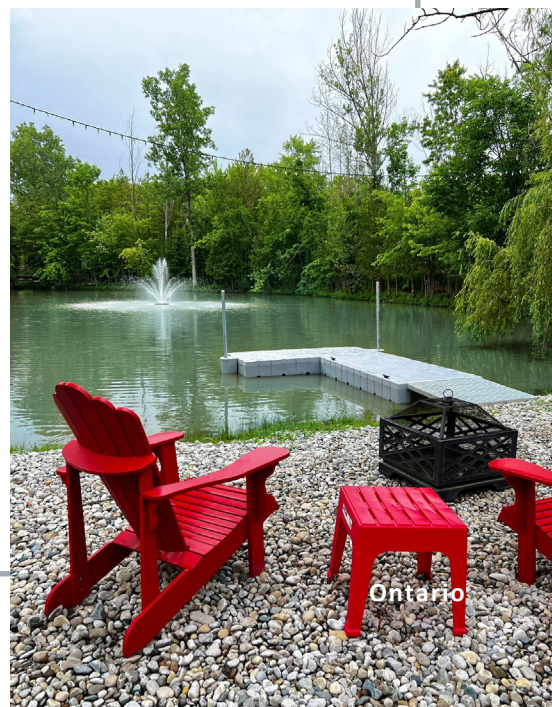
South Carolina



New Jersey



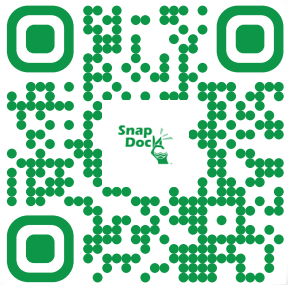
New Jersey



Ontario



Location: Wisconsin



1-800-483-5205
sales@snapdock.com
snapdock.com

11405 N. Pennsylvania Street,
Ste. 106,
Carmel, IN, 46032,
United States

